

EZ FLAPPER EXHAUST VENT

DESCRIPTION:

EZ Flapper Exhaust Vents (“EZ Flapper”) are specifically intended for use on low-slope roofing systems for powered fan ventilation, such as bathroom, dryer, and kitchen areas.

EZ Flappers are **not** intended for heated exhaust such as furnaces and chimneys.

The EZ Flapper hood assembly includes hinged baffles and removable screens. The stemmed base and hood are installed separately to accommodate the 60-mil (1.52 mm) reinforced Duro-Last® PVC or Duro-TECH™ TPO membrane flashing.

ORDERING:

EZ Flappers can be ordered individually. Available colors and sizes are as follows:

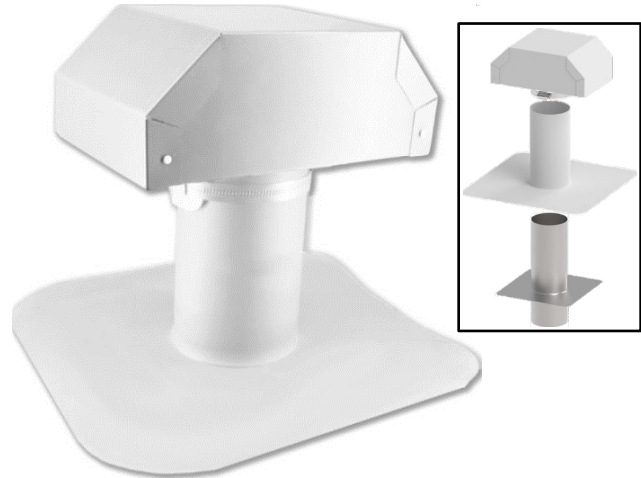
EZ FLAPPER VENT ORDERING				
Skirt Type / Sizes	Wt/Piece lb (kg)	Membrane Color – Item Numbers		
		White	Tan	Gray
PVC				
4-Inch (102-mm)	5.5 (2.49)	#123304W	#123304B	#123304G
6-Inch (152-mm)	7.5 (3.40)	#123306W	#123306B	#123306G
8-Inch (203-mm)	10 (4.54)	#123308W	#123308B	#123308G
10-Inch (254-mm)	10 (4.54)	#123310W	#123310B	#123310G
TPO				
4-Inch	5.5 (2.49)	#123304TW	#123304TB	#123304TG
6-Inch	7.5 (3.40)	#123306TW	#123306TB	#123306TG
8-Inch	10 (4.54)	#123308TW	#123308TB	#123308TG
10-Inch	10 (4.54)	#123310TW	#123310TB	#123310TG

STORAGE AND HANDLING:

- Keep away from ignition sources.
- Always store in a dry location protected from the elements.

PRECAUTIONS:

- Keep away from ignition sources. **Do not smoke while installing.**
- Read Safety Data Sheets (“SDS”) prior to using. SDS can be found at: <https://www.duro-last.com/>.
- Wear proper personal protective equipment, such as gloves and eye protection, per the SDS.



INSTALLATION:

EZ Flappers must be installed in compliance with the appropriate Duro-Last PVC or Duro-TECH TPO details and specifications.

General

- **NOTE: NOT FOR USE WITH HEATED EXHAUST APPLICATIONS.**
- **Remove or omit the hood’s screen inserts if used in a dryer vent application to help prevent debris buildup.**

1. Insert the short side of the base’s stem into the appropriately-sized vent opening.
2. Fasten the base using four approved fasteners, 1-1/2 inches (38 mm) from each outside corner.
3. From below the roof deck, connect the building’s vent ducting to the base’s stem, per applicable code.
4. From above the roof deck, install the membrane flashing over the base.
5. Prepare all welding surfaces by cleaning with approved membrane cleaner, if necessary.
6. Heat (hot-air) weld the membrane flashing to the field membrane with a minimum 1-1/2-inch (40-mm) weld.
7. Apply caulking between the base and membrane flashing at the appropriate stainless steel band location.
8. Place the hood assembly over the membrane flashing and base.
9. Tighten the stainless steel band over the caulking location until the hood assembly is secure.