

Aspire Interlocking Paver – for Rooftops and Roof Decks

Description:

The Aspire Interlocking Paver System consists of a patented grid and individual pavers are made from recycled materials.

Benefits:

- Authentic – looks like real bricks and pavers
- Lightweight and easy to handle
- Less labor to install
- Durable – crack, scratch and stain resistant
- Low maintenance – no sealer needed
- Sustainable – made from up to 95% post-consumer recycled materials



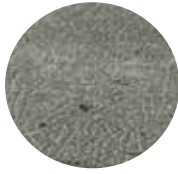
The patented grid system not only takes less time to install than traditional concrete pavers, it makes creating patterns and designs easier than ever. Choose from five colors, three paver sizes and a variety of patterns for a form and function to fit your project.

Property	Value
Paver Sizes	8"x8", 4"x8", 4"x4", 16"x16"
Grid Size	16"x16"
Combined Height	1.75"
Weight (per unit)	12 lbs. (6.74 lbs./sq. ft.)
Square Feet (per unit)	1.78 sq. ft.
Accessories	Transition Paver Bullnose Paver
Colors	Color Collection Boardwalk, Charcoal, Ivory, Obsidian and Redwood
Pallet Sizes	
Quantity	180 units (approx. 320 sq. ft.)
Weight	Approx. 2,210 lbs.

Color Collection



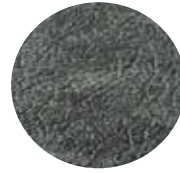
Boardwalk



Charcoal



Ivory



Obsidian



Redwood

Specification	Test Method	Result
Fire Classification	ASTM E108-007	Class A
2" Hail Impact	ASTM ANSI FM 4470-22	Pass
Compression Strength	ASTM C140-09 Section 7	3,521 psi
Flexural Modulus	ASTM C140-09	3,842 psi
Water Absorption	ASTM X67 Section 8	4.10%
Freeze-Thaw	ASTM C67 Section 9	Pass: No sign of cracking or disintegration
Freeze-Thaw Cycling	ASTM C67	Pass
Specific Gravity	FSBP Test Method	0.9
Coefficient of Friction with Pull Monitor	ASTM C1028-07	Wet: 0.47 Dry: 0.83
Coefficient of Friction with Pull Monitor	ASTM D2394 Section 33	Wet: 0.73 Dry: 0.52
Chemical Resistance	ASTM F925	No Dulling, color change or surface attack

Specifications are subject to change without notice. For more information, please call Duro-Last® at 800.248.0280.