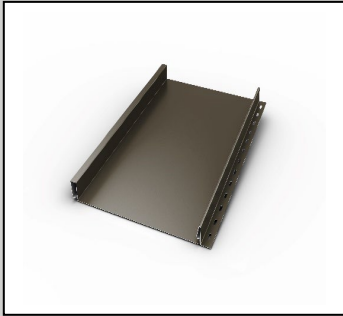


# Product Data Sheet



## DefendEX™ SL1500

### Metal Paneling

Standing Seam Panel for Architectural Metal Roofing

#### Description

DefendEX™ SL1500 Roofing Panel (SL1500) is a patented self-locking, architectural standing seam metal roof panel that eliminates the need for clips and seaming tools. The seams snap together for easy installation and an optional pre-assembly, thermally-applied, in-seam sealant is available.

For standard color selection, consult the current *EXCEPTIONAL® Metals Color Chart*.

Custom color services are available upon request.

The minimum slope requirement for an Exceptional Metals warranty is 3:12.

Contact the Duro-Last Quality Assurance Department for warranty information.

**NOTE:** SL1500 is designed and tested for roofing applications only. Any other installation is at the risk of the contractor and is not the responsibility of Amrize™ Building Envelope LLC.

#### Method of Application

1. A smooth, solid substrate of plywood, OSB, or a rigid insulation board, mechanically fastened to a steel deck, is required for SL1500 panels.
2. SL1500 panels must be installed in a sequential order.
3. Prior to panel installation, application of an approved underlayment is required.
4. Use approved fasteners containing a nylon washer to allow thermal movement and to minimize oil-canning.

**NOTE:** Install assembly according to the *Metal Roofing Design Guide* and the *Metal Roofing System Application Guide* found on the [Exceptional Metals website](http://ExceptionalMetals.com). Follow approved installation details.

#### Storage

- DefendEX metal panels should be stored in a well-ventilated, dry location, where no moisture can contact them. Moisture (From rain, snow, condensation, etc.) trapped between layers of material may cause water stains or white rust, which can affect the service life of the material and will detract from the appearance.
- If outdoor storage cannot be avoided, protect the panels with a ventilated canvas or waterproof paper cover. Do not use plastic, which can cause condensation. Keep the material off the ground in an inclined position with an insulator such as wood, or keep panels crated.
- Storage of end-use materials with protective film applied to the surface should be:
  - Wrapped/packaged to prevent exposure to direct UV, water, oils, or other contaminants.
  - Stored in an enclosed building or holding facility.
  - Within a temperature range of 45° - 90° F (7° - 32° C) and 20 - 80% relative humidity.
  - Less than six months with masking applied (warehouse storage and outdoor exposure combined).
  - Protective film may become brittle with long-term UV exposure.

## Precautions

- Oil canning is not a cause for rejection.
  - Heavier gauges, narrower widths, striations, and embossing minimize oil canning.
- Ensure that the load weight of product pallets do not exceed the capabilities of the structure.
- Sealant for end laps and lap joints shall be non-drying, non-toxic, and non-shrinking with a serviceable temperature of -60° - 212° F (-51° - 100° C).
- Quality, long-life butyl sealants work best as a gasket sandwiched between two pieces of metal. Non-acetic cured, silicone, color-matching sealants are recommended when voids must be filled. Sealants are not a substitute for proper assembly and workmanship.
- Exercise caution when handling to avoid injury or product damage.
- Refer to Safety Data Sheets (SDS) for safety information, including PPE.
- **Immediately remove protective film after installation.**

Manufacturing Location: Anoka, MN



Product Data	
Property	Value
Tapered Panels	No
Radius Panels	No
Stiffening Ribs	Optional
Striations	Optional
Sealant	Optional: In-seam, thermally-applied
Standard Panel Surface	<u>Smooth</u>
Optional Panel Surface	<u>Stucco Embossed</u> : 26 ga (0.48 mm) <u>Steel</u> : 24 ga (0.64 mm) & 22 ga (0.64 mm) <u>Aluminum</u> : 0.032 in. (0.81 mm) & 0.040 in. (1.02 mm)
Clip	No Clip Required

Product Size	
Property	Value
Panel Width	9.75 - 24 in. (247.65 - 609.60 mm)
Optimal Panel Width	9.75 in. (247.65 mm) & 17.75 in. (450.85 mm)
Seam Height	1.50 in. (38.10 mm)
Minimum Panel Length	36 in. (914.40 mm)
Maximum Panel Length	600 in. (15,240.00 mm)

Technical Information	
Property	Value
Uplift Resistance	UL 580, Class 90
Air Infiltration	ASTM E283 & E1680
Structural Performance	ASTM E330 & E1592
Water Penetration	ASTM E331, E1646-95
Fire Rating	UL 263, UL 790, & UL Class A Rated Assemblies
Hail Impact Rating	UL 2218, Class 4

**NOTE:** Testing is not applicable for all combinations of substrates, materials, and dimensions. All construction assemblies must be installed in accordance with the tested assembly. Refer to the *Metal Tested Assembly Guide* on the Exceptional Metals website for tested assemblies and code listings.

Contact the Engineering Services Department for warranty requirements and additional information.



Typical Properties		
Material and Thickness	Metal Specification	Available Finishes
<u>Aluminum</u> 0.032 in. (0.81 mm) 0.040 in. (1.02 mm)	<b>Base Metal:</b> Aluminum <b>Minimum Yield:</b> 21 KSI (145 MPa) <b>Thermal Expansion:</b> $12.6 \times 10^{-6}$ in/in/ °F ( $22.68 \times 10^{-6}$ mm/mm/°C) <b>Modulus of Elasticity:</b> $10.0 \times 10^3$ x KSI (68.9 MPa)	Anodized Kynar 500®/Hylar 5000® Unpainted/Mill Finish
<u>Galvanized Steel</u> 26 ga (0.48 mm) 24 ga (0.64 mm) 22 ga (0.79 mm)	<b>Base Metal:</b> AISI-G90 Galvanized steel <b>Minimum Yield:</b> 33 to 45 KSI (227 to 310 MPa) <b>Thermal Expansion:</b> $6.7 \times 10^{-6}$ in/in/ °F ( $12.06 \times 10^{-6}$ mm/mm/°C) <b>Modulus of Elasticity:</b> $29.0 \times 10^6$ x KSI (200 GPa)	Kynar 500/Hylar 5000 Unpainted G90
<u>Zincalume®/Galvalume® Steel</u> 26 ga (0.48 mm) 24 ga (0.64 mm) 22 ga (0.79 mm)	<b>Base Metal:</b> AZ-50 Hot-Dipped Galvalume <b>Minimum Yield:</b> 50 KSI (345 MPa) <b>Thermal Expansion:</b> $6.7 \times 10^{-6}$ in/in/ °F ( $12.06 \times 10^{-6}$ mm/mm/°C) <b>Modulus of Elasticity:</b> $29.0 \times 10^6$ x KSI (200 GPa)	Zincalume Plus/ Galvalume Plus/ Acrylume® - Clear Acrylic Coated Kynar 500/Hylar 5000
<u>AGSC Copper</u> 16 oz (0.56 mm) 20 oz (0.69 mm)	<b>Minimum Content:</b> 99.9% copper, silver counting as copper, cold rolled from ingots of 122 alloy <b>Thermal Expansion:</b> $9.3 \times 10^{-6}$ in/in/ °F ( $1.674 \times 10^{-5}$ mm/mm/°C) Meets and/or exceeds ASTM B370 specification	Natural

**NOTE:** Consult the appropriate base metal sheet and coil product data sheet for additional information on the base metal and coating. Not all materials and thicknesses are available from all locations.

Contact EXCEPTIONAL Metals Technical Services at (866) 337-4599 for further information.

This sheet is meant to highlight Exceptional Metals products and specifications and is subject to change without notice. Amrize takes responsibility for furnishing quality materials that meet published Exceptional product specifications or other technical documents, subject to normal manufacturing tolerances. Neither Amrize nor its representatives practice architecture. Amrize offers no opinion on and expressly refuses any responsibility for the soundness of any structure. Amrize accepts no liability for structural failure or resultant damages. Consult a competent structural engineer prior to installation if the structural soundness or structural ability to properly support a planned installation is in question. No Amrize representative is authorized to vary this disclaimer.

EXCEPTIONAL Metals is a brand of Amrize Building Envelope LLC.  
 "EXCEPTIONAL", "DefendEX", and Amrize are trademarks in the Amrize portfolio. All other trademarks are property of their respective owners.

Phone: (866) 337-4599  
 exceptionalmetals.com

