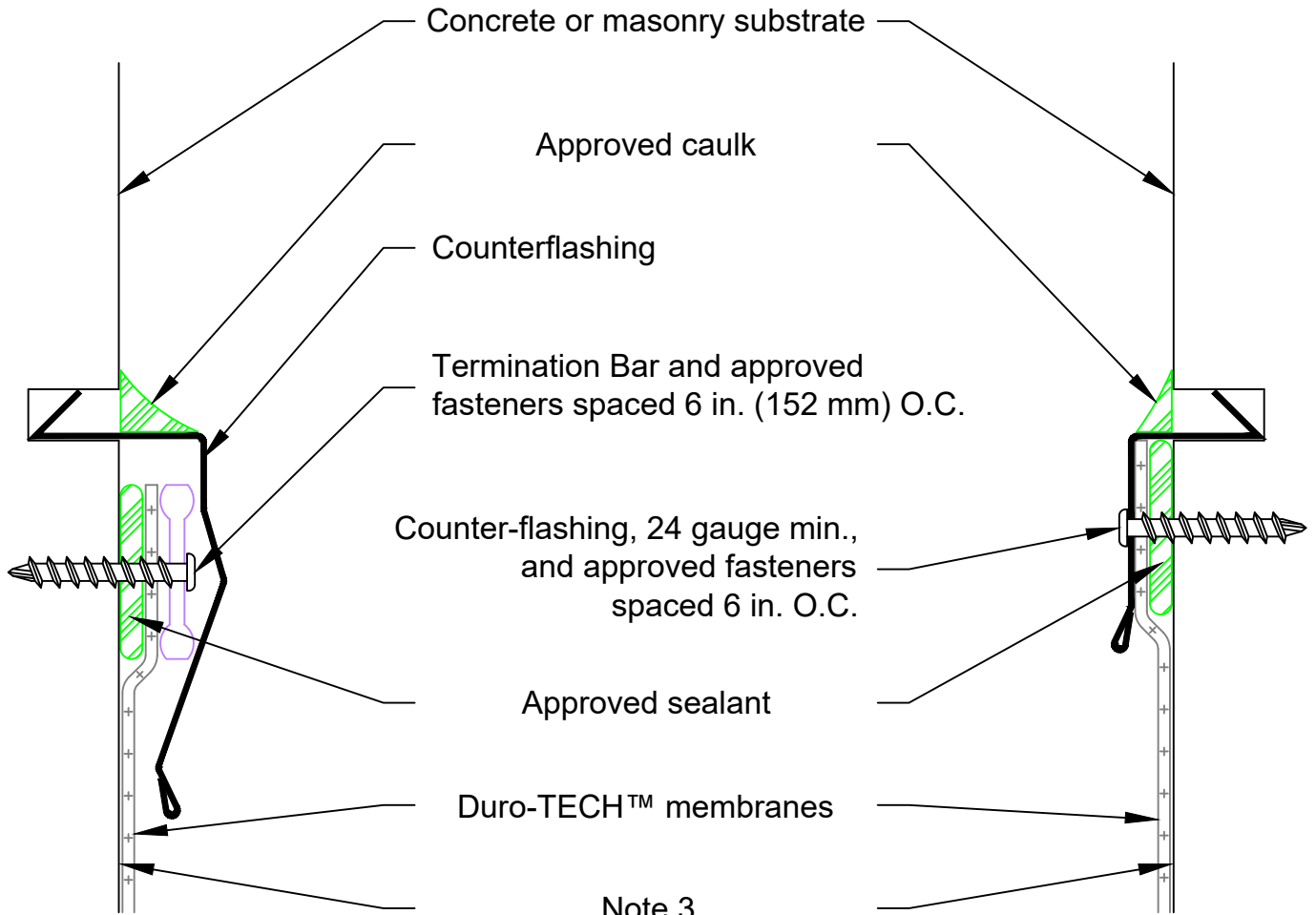


OPTION #1

OPTION #2



Note 3

Note 1: This detail is only applicable with concrete or masonry walls.

Note 2: Minimum termination height for parapet flashing is 8 in. (203 mm) above finished deck. Refer to Detail T6020.

Note 3: Install approved slip sheet, if required (not shown).

REVISED: N/A	TPO PARAPET DETAIL FOR MECHANICALLY FASTENED SYSTEMS
PREVIOUS: 05/21/2025	REGLET COUNTERFLASHING - OPTIONS 1 AND 2
SCALE: NONE	NEW CONSTRUCTION OR RE-ROOF