



# NEMO EVALUATIONS REPORT

Report No.: NER-EXMT-001  
Revision 0: 2026-03-02  
Page 1 of 14

Amrize Building Envelope, LLC  
(Exceptional Metals)  
FL48103

**Nemo|cert.**  
353 Christian Street, Unit 12b  
Oxford, CT 06478  
(475) 888-CERT (2378)  
[www.nemocert.com](http://www.nemocert.com)

INSPECT

CERTIFY

EVALUATE

VALIDATE

QUALIFY

## NEMO EVALUATION REPORT (NER)



### Amrize Building Envelope, LLC (Exceptional Metals)

831 West Morley Drive  
Saginaw, MI 48601  
(866) 337-4599

### SUBJECT: EXCEPTIONAL Metals Roof Edge Termination Systems

**SCOPE:** This NEMO Evaluation Report (henceforth 'NER') is issued under F.A.C. [Rule 61G20-3](#) and the applicable rules and regulations governing Product Approval of construction materials in the State of Florida and ISO/IEC 17065 via [NEMO|cert.](#) NEMO Evaluations has evaluated the product described herein for compliance with the [Code sections noted herein](#).

**CODE:** 2021 International Building Code  
2023 Florida Building Code, 8<sup>th</sup> Edition

**JURISDICTION:** Non-HVHZ and HVHZ

**CATEGORY:** **FBC:** Roofing **NEMO:** Flashing Accessories

**SUB-CATEGORY:** **FBC:** Roofing Accessories that are an Integral Part of the Roofing System

**CSI DIVISION:** 07 00 00 Thermal and Moisture Protection  
07 71 00 Roof Specialties

**METHOD:** Method 1, Option C – Codified Material, Evaluation by Evaluation Entity

**COMPLIANCE STATEMENT:** **EXCEPTIONAL Metals Roof Edge Termination Systems**, as produced by **Amrize Building Envelope, LLC (Exceptional Metals)**, has demonstrated compliance with the [Code sections noted herein](#) through testing in accordance with the referenced Standards, rational analysis and an ongoing quality assurance program. Compliance is subject to the [Installation Requirements](#) and [Limitations of Use](#) set forth herein.

**QUALITY ASSURANCE:** Evidence of current quality assurance shall be listing and/or labeling in accordance with the requirements of [NEMO|cert.](#)

**CONTINUED COMPLIANCE:** This NER is valid until such time the named product(s) change, the referenced Quality Assurance changes, or the evaluated Code provisions change. NEMO Evaluations requires, at minimum, a complete review of this NER with each 3-year Code Cycle.

**BUILDING PERMIT REQUIREMENTS:** As required by the Building Official or Authority Having Jurisdiction to evaluate the installation of this product.

**ADVERTISEMENT:** "NEMO Evaluated" may be displayed in advertising literature. If any portion of the NER is displayed, it shall be displayed in its entirety.

- CERTIFICATION OF INDEPENDENCE:**
- ✓ NEMO CERT, LLC has not, nor does it intend to acquire or will it acquire, a financial interest in any company manufacturing or distributing products it evaluates.
  - ✓ NEMO CERT, LLC is not owned, operated or controlled by any company manufacturing or distributing products it evaluates.
  - ✓ This is a building code evaluation. NEMO CERT, LLC is not, in any way, the Designer of Record for any project on which this NER, or previous versions thereof, is/was used for permitting or design guidance.





# NEMO EVALUATIONS REPORT

Report No.: NER-EXMT-001  
 Revision 0: 2026-03-02  
 Page 2 of 14

**Amrize Building Envelope, LLC**  
**(Exceptional Metals)**  
 FL48103



## 1. CODES, PROPERTIES AND STANDARDS:

CODE	SECTION	PROPERTY	STANDARD
2023 Florida Building Code, 8th Edition	1504.5	Wind	ANSI/SPRI/FM4435 ES-1
	1523.6.5.2.14	Wind	TAS 111 (B), TAS 111 (C)
2021 International Building Code	1504.6	Wind	ANSI/SPRI/FM4435 ES-1

## 2. PRODUCTS:

TABLE 1: EVALUATED METAL EDGE COMPONENTS (NEMO Certified. Consult <a href="#">Directory of Certified Products</a> for production location(s))			
TYPE	SUB-TYPE	PRODUCT NAME	TEST METHOD
Edge Metal	Drip edge & gravel stop	Exceptional Metals Vinyl-Coated Drip Edge	ES-1: RE-2 & TAS 111 (B)
		Exceptional Metals Gravel Stop Cover	ES-1: RE-2 & TAS 111 (B)
	Fascia cover	All-Term	ES-1: RE-2 & TAS 111 (B)
		2-Piece Snap-On Compression System	ES-1: RE-2 & TAS 111 (B)
		Metal Fascia System	ES-1: RE-2 & TAS 111 (B)
		Duro-Last Fascia System	ES-1: RE-2 & TAS 111 (B)
	Coping	Snap Coping Wall Metal Cap	ES-1: RE-3 & TAS 111 (C)

## 3. INSTALLATION:

3.1 **EXCEPTIONAL Metals Roof Edge Termination Systems** shall be installed in accordance with **Amrize Building Envelope, LLC (Exceptional Metals)** published installation instructions, subject to the [Limitations of Use](#) noted herein, and the information noted below.

3.2 Exceptional Metals Vinyl-Coated Drip Edge: [\(Detail #3120\)](#)  
 A vinyl coated roof edge system consisting of 0.040-inch aluminum or 24 ga. galvalume steel drip-edge with an attached 6-inch PVC membrane shirt. A vinyl coated, 20 ga. galvanized steel cleat is used with drip-edge systems with a face height exceeding 4-inch.

TABLE 2: ULTIMATE TESTED PRESSURE RATINGS; ANSI/SPRI RE-2 & TAS 111(B) EXCEPTIONAL METALS VINYL-COATED DRIP EDGE							
No.	Anchor / Base		Drip Edge Cover			Horizontal Pressure (psf)	
	Material	Fasten	Material	Face Height (inch)	Fasten	Perimeter	Corner
1.	None	N/A	24 ga. galvalume steel	Max. 3.0	0.375-inch diameter ring shank nails, 6-inch o.c.	728	723
2.	None	N/A	0.040-inch aluminum	Max. 3.0	0.375-inch diameter ring shank nails, 6-inch o.c.	960	958



# NEMO EVALUATIONS REPORT

Report No.: NER-EXMT-001  
 Revision 0: 2026-03-02  
 Page 3 of 14

Amrize Building Envelope, LLC  
 (Exceptional Metals)  
 FL48103



### 3.3 Exceptional Metals Gravel Stop Cover:

(Detail [3520](#) & [3530](#))

A gravel stop cover system consists of 0.040-inch aluminum, 24 ga. galvalume steel, 24-ga. stainless steel, 24 ga. bonderized steel or 16 o.z. copper with a rigid Duro-Last Vinyl Gravel Stop.

TABLE 3: ULTIMATE TESTED PRESSURE RATINGS; ANSI/SPRI RE-2 & TAS 111(B) EXCEPTIONAL METALS GRAVEL STOP COVER							
No.	ANCHOR / BASE			DRIP EDGE COVER		HORIZONTAL PRESSURE (PSF)	
	MATERIAL	FASTENER	SPACING	MATERIAL	FACE HEIGHT (INCH)	PERIMETER	CORNER
1.	0.112-inch thick, PVC	To wood nailer with (2) two Duro-Last #14 HD x 2.0-inch long screws	Front Face: At 0.75-inch, 6-inch and 12-inch from the ends with interior fasteners spaced 8-inch o.c.  Top face: at pre-punched holes.	24 ga. galvalume steel	Max. 3	509	506
2.	0.112-inch thick, PVC	To wood nailer with (2) two Duro-Last #14 HD x 2.0-inch long screws	Front Face: At 0.75-inch, 6-inch and 12-inch from the ends with interior fasteners spaced 8-inch o.c.  Top face: at pre-punched holes.	24 ga. galvalume steel	Max. 5	509	506

### 3.4 All-Term:

(Detail [3580](#))

Perimeter edge system consists of 0.040-inch aluminum, 24-ga. bonderized steel, 24-ga. galvalume steel or 24-ga. stainless steel fascia cover with a 0.050-inch aluminum or 22-ga. galvalume steel anchor/base for use with single-ply roof systems.

TABLE 4: ULTIMATE TESTED PRESSURE RATINGS; ANSI/SPRI RE-2 & TAS 111 (B) ALL-TERM							
No.	ANCHOR BAR			FASCIA COVER		HORIZONTAL PRESSURE (PSF)	
	MATERIAL	FASTENER	SPACING	MATERIAL	FACE HEIGHT (INCH)	PERIMETER	CORNER
1.	0.050-inch aluminum or 22-ga. Galvalume steel	To wood nailer with (2) two Duro-Last #14 HD x 2.0-inch long screws	12-inch o.c. in two staggered rows.	0.040-inch aluminum	Max. 8	393	398
2.	0.050-inch aluminum or 22-ga. Galvalume steel	To wood nailer with (2) two Duro-Last #14 HD x 2.0-inch long screws	12-inch o.c. in two staggered rows.	24-ga., stainless steel	Max. 8	422	416
3.	0.050-inch aluminum or 22-ga. Galvalume steel	To wood nailer with (2) two Duro-Last #14 HD x 2.0-inch long screws	12-inch o.c. in two staggered rows.	24-ga., bonderized steel	Max. 8	320	307
4.	0.050-inch aluminum or 22-ga. Galvalume steel	To wood nailer with (2) two Duro-Last #14 HD x 2.0-inch long screws	12-inch o.c. in two staggered rows.	24 ga., galvalume steel	Max. 8	349	362



# NEMO EVALUATIONS REPORT

Report No.: NER-EXMT-001  
 Revision 0: 2026-03-02  
 Page 4 of 14

Amrize Building Envelope, LLC  
 (Exceptional Metals)  
 FL48103



### 3.5 2-Piece Snap-On Compression System:

[\(Detail 3110\)](#)

Perimeter edge system consists of 0.040-inch aluminum, 24-ga. bonderized steel, 24-ga. galvalume steel or 24-ga. stainless steel fascia cover with a 24-ga. galvalume steel anchor/base for use with single-ply roof systems.

TABLE 5: ULTIMATE TESTED PRESSURE RATINGS; ANSI/SPRI RE-2 & TAS 111 (B)							
2-PIECE SNAP-ON COMPRESSION							
No.	ANCHOR BAR			FASCIA COVER		HORIZONTAL PRESSURE (PSF)	
	MATERIAL	FASTENER	SPACING	MATERIAL	FACE HEIGHT (INCH)	PERIMETER	CORNER
1.	24-ga. galvalume steel	To wood nailer with 1.5-inch 4d stainless steel ring shank nails	Front Face: 6-inch o.c. in two staggered rows, approx. 4.125-inch and 1.125-inch from lowest part of drip edge.	24-ga., galvalume steel	Max. 6	407	398
2.	24-ga. galvalume steel	To wood nailer with 1.5-inch 4d stainless steel ring shank nails	Front Face: 6-inch o.c. approx. 1.75-inch. at front.  Top face: 12-inch o.c. approx. 1.375-inch at top.	24-ga., galvalume steel	Max. 4	262	271

### 3.6 Duro-Last Fascia System:

[\(Detail 3030\)](#)

Perimeter edge system consists of a continuous vinyl bar and a snap on vinyl fascia cover.

TABLE 6: ULTIMATE TESTED PRESSURE RATINGS; ANSI/SPRI RE-2 & TAS 111 (B)							
DURO-LAST FASCIA SYSTEM							
No.	ANCHOR BAR			FASCIA COVER		HORIZONTAL PRESSURE (PSF)	
	MATERIAL	FASTENER	SPACING	MATERIAL	FACE HEIGHT (INCH)	PERIMETER	CORNER
1.	0.143-inch thick, vinyl	To wood nailer with Duro-Last #14 HD x 2.0-inch long screws at pre-punched holes.	6-inch o.c.	0.0443-inch thick, PVC	Max. 2	567	560
2.	0.146-inch thick, PVC	To wood nailer with Duro-Last #14 HD x 2.0-inch long screws at pre-punched holes.	12-inch o.c., staggered 6-inch o.c. in two rows.	0.0933-inch thick, PVC	Max. 4	960	958

### 3.7 Metal Fascia System:

[\(Detail 3500 & 3510\)](#)

Perimeter edge system consists of 0.040-inch aluminum, 24-ga. bonderized steel, 24-ga. galvalume steel, 24-ga. stainless steel, or 16 oz. copper fascia cover with a Duro-Last vinyl fascia bar.

TABLE 7: ULTIMATE TESTED PRESSURE RATINGS; ANSI/SPRI RE-2 & TAS 111 (B)							
METAL FASCIA SYSTEM							
No.	ANCHOR BAR			FASCIA COVER		HORIZONTAL PRESSURE (PSF)	
	MATERIAL	FASTENER	SPACING	MATERIAL	FACE HEIGHT (INCH)	PERIMETER	CORNER
1.	0.143-inch thick, PVC	To wood nailer with Duro-Last #14 HD x 2.0-inch long screws at pre-punched holes.	6-inch o.c.	24-ga., galvalume steel	Max. 1-3/4	582	578
2.	0.146-inch thick, PVC	To wood nailer with 2-3/8-inch x 0.113-inch annular ring screws.	12-inch o.c., staggered 6-inch o.c. in two rows.	24-ga., galvalume steel	Max. 4	553	560



# NEMO EVALUATIONS REPORT

Report No.: NER-EXMT-001  
Revision 0: 2026-03-02  
Page 5 of 14

Amrize Building Envelope, LLC  
(Exceptional Metals)  
FL48103



### 3.8 Snap Coping Wall Metal Cap:

[\(Detail 6055\)](#)

Coping system consists of 0.040-inch or 0.050-inch aluminum, 24-ga. bonderized steel, 24-ga. galvalume steel or 24-ga. stainless steel coping with 16-inch wide, 16 ga. galvanized steel anchor clips.

Anchor clip is fastened to wood substrate with four (4) #9 x min. 1.5-inch hex head screws with rubber washers, one at each top corner, and two (2) 1.25-inch roofing nails through outside face.

TABLE 8: ULTIMATE TESTED PRESSURE RATINGS; ANSI/SPRI RE-3 & TAS 111 (C)								
SNAP COPING WALL METAL CAP								
No.	ANCHOR CLIPS		SNAP-ON COPING CAP			HORIZONTAL (PSF)	VERTICAL (PSF)	
	MATERIAL	SPACED	MATERIAL	MAX. WIDTH (IN)	MAX. FACE LEG (IN)			MAX. BACK LEG (IN)
1.	16-inch wide, 16 ga. galvanized steel	5 ft o.c.	0.040-inch or 0.050-inch aluminum	12	4	3	58	101
2.	16-inch wide, 16 ga. galvanized steel	5 ft o.c.	24-ga. bonderized steel	12	4	3	58	101
3.	16-inch wide, 16 ga. galvanized steel	5 ft o.c.	24-ga. stainless steel	12	4	3	58	101
4.	16-inch wide, 16 ga. galvanized steel	5 ft o.c.	24-ga. galvalume steel	12	4	3	58	101

## 4. LIMITATIONS OF USE:

### 4.1 General:

4.1.1 This is a building code evaluation. NEMO CERT, LLC is not, in any way, the Designer of Record for any project on which this NER, or previous versions thereof, is/was used for permitting or design guidance. NERs are not to be construed as representing any attributes not specifically listed, nor are NERs to be construed as an endorsement of the subject of the report or a recommendation for its use. There is no warranty by NEMO CERT, LLC, express or implied, as to any finding or other matter in this report, or as to any product covered by the report.

4.1.2 All products listed herein shall be installed in conjunction with **Amrize Building Envelope, LLC (Exceptional Metals)** required accessories, including but not limited to fasteners, miters, splice caps, splice plates, corners, end caps, pier caps, etc.

4.1.3 The tie-in between edge metal and adjacent roofing shall be in accordance with the roof system manufacturer's published installation instructions.

4.1.4 The ultimate tested pressure ratings, which do not include a margin of safety, are set forth in [Section 3](#) of this NER.

(a) The ultimate tested pressure ratings apply to roof height < 60 ft.

(b) The maximum attachment spacing shall not be exceeded.

(c) The selected assembly shall meet or exceed the design pressure requirements for the project, determined in accordance with **IBC / FBC Chapter 16** or [RAS 111](#), with a minimum 2 to 1 margin of safety per **IBC / FBC 1504.9** or **FBC HVHZ 1620**.

### 4.1.3 Fire Classification:

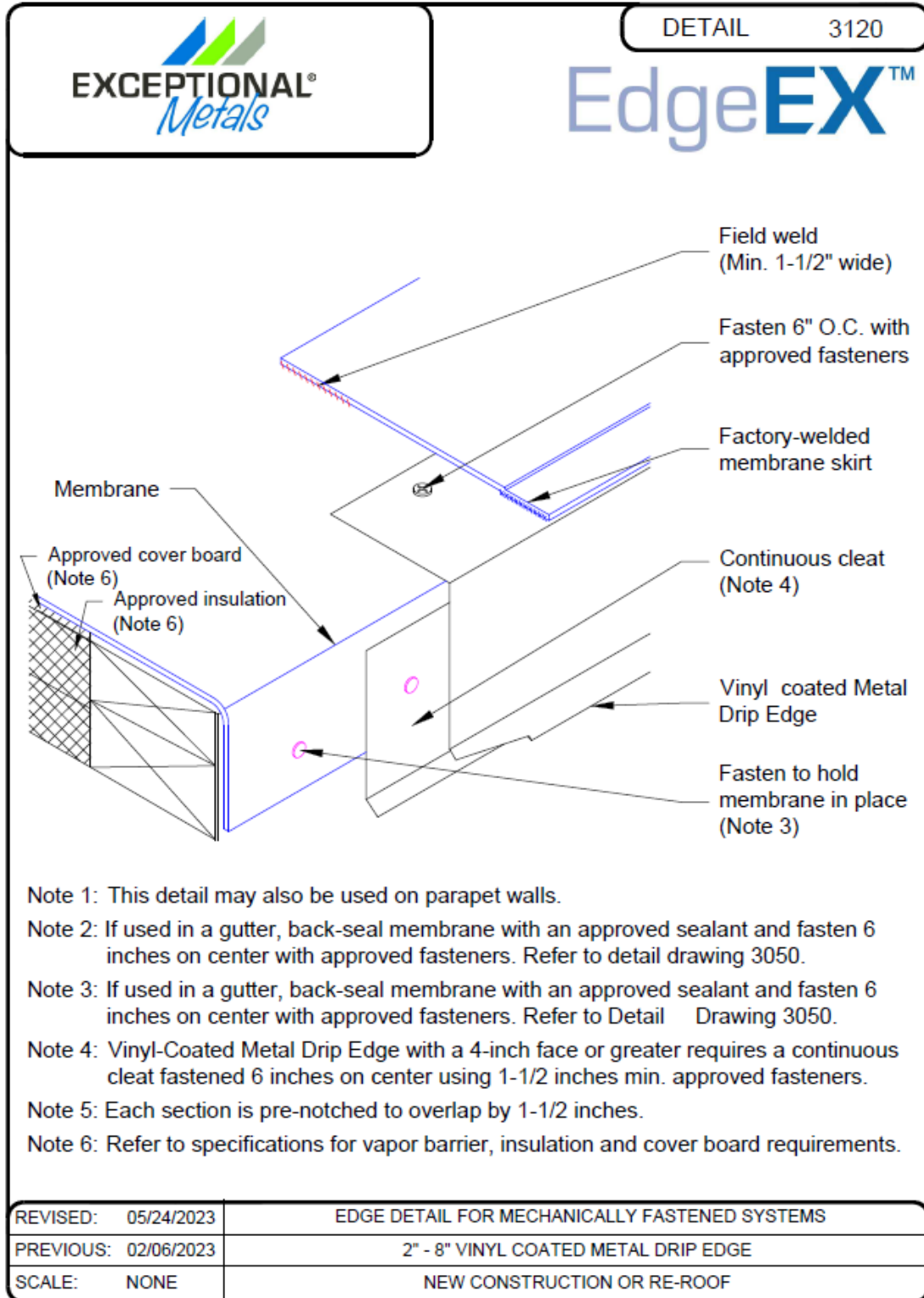
(a) This NER does not include evaluation of fire classification. Refer to **IBC / FBC 1505** or **FBC HVHZ 1516** for requirements and limitations regarding roof assembly fire classification.

(b) The existing roof system and/or substrate shall meet fire classification requirements of the project to the satisfaction of the Authority Having Jurisdiction.

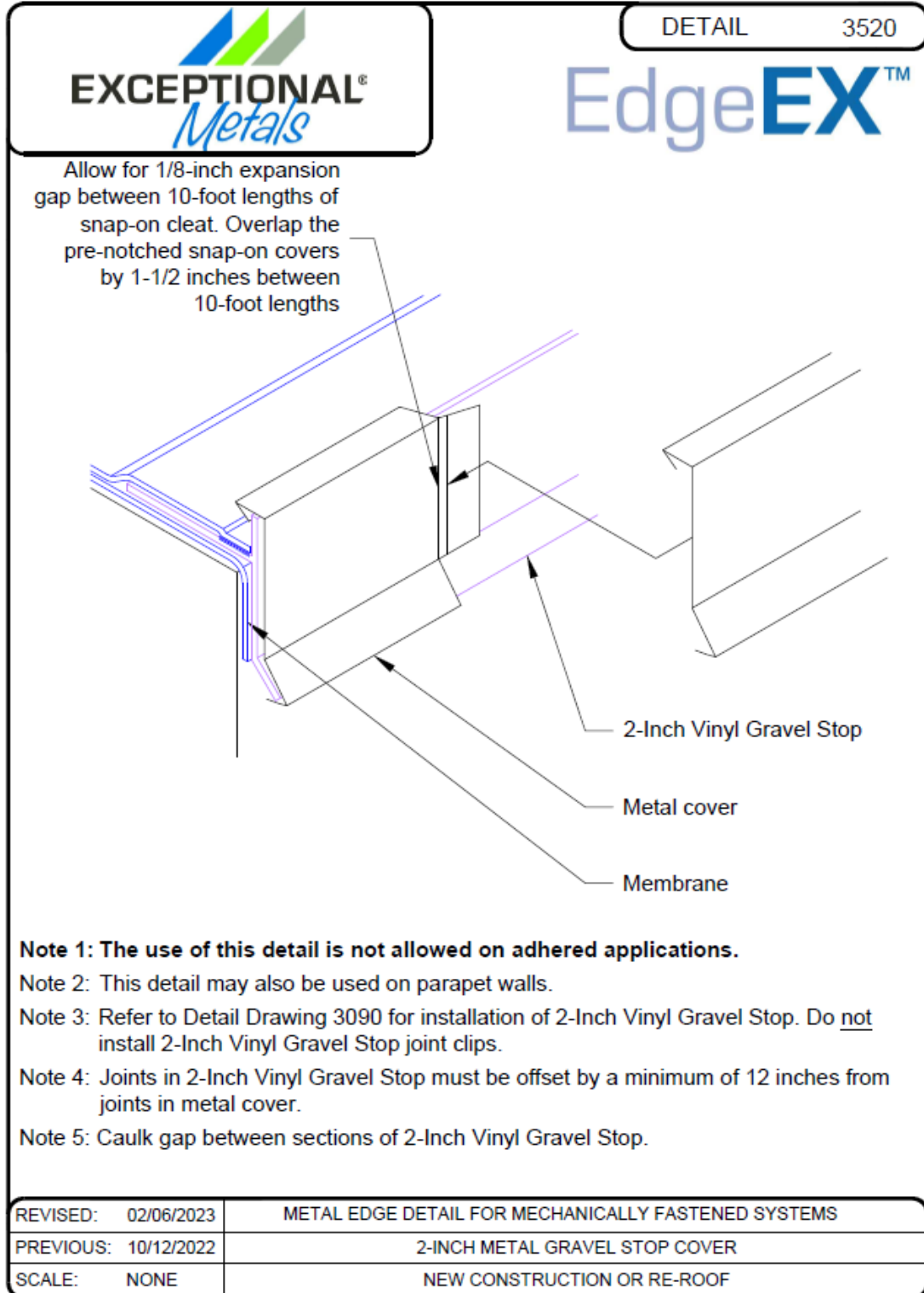
### 4.1.4 Quality Assurance:

All components in the roof assembly shall have quality assurance surveillance in accordance with **F.A.C. Rule 61G20-3**. For components listed herein that are produced by a manufacturer other than the report holder on [Page 1](#) of this NER, refer to the supporting evidence held by the component manufacturer.

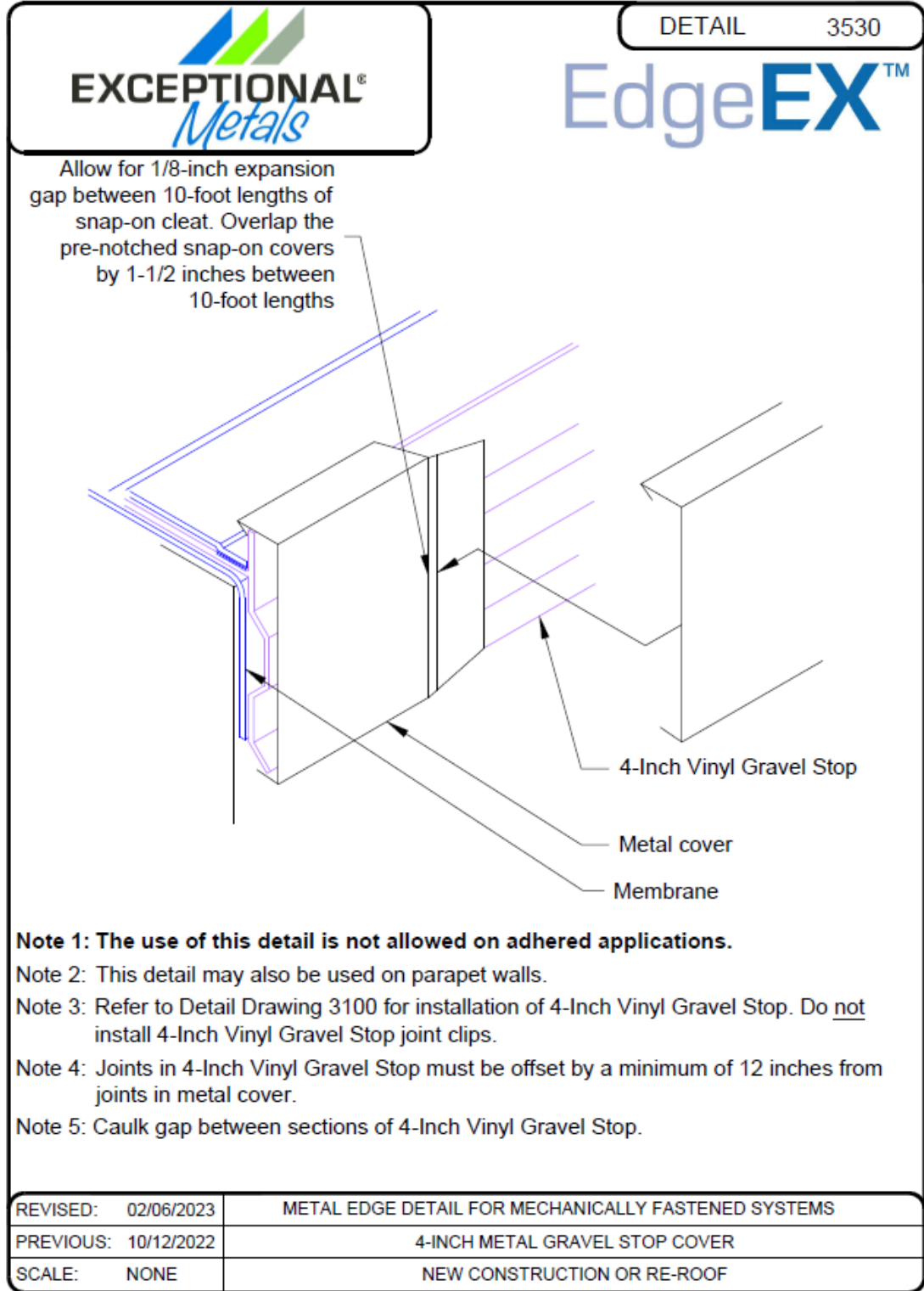
**5 METALS ROOF EDGE TERMINATION SYSTEMS DRAWINGS:**  
**5.1 DETAIL #3120: EXCEPTIONAL METALS VINYL-COATED DRIP EDGE**



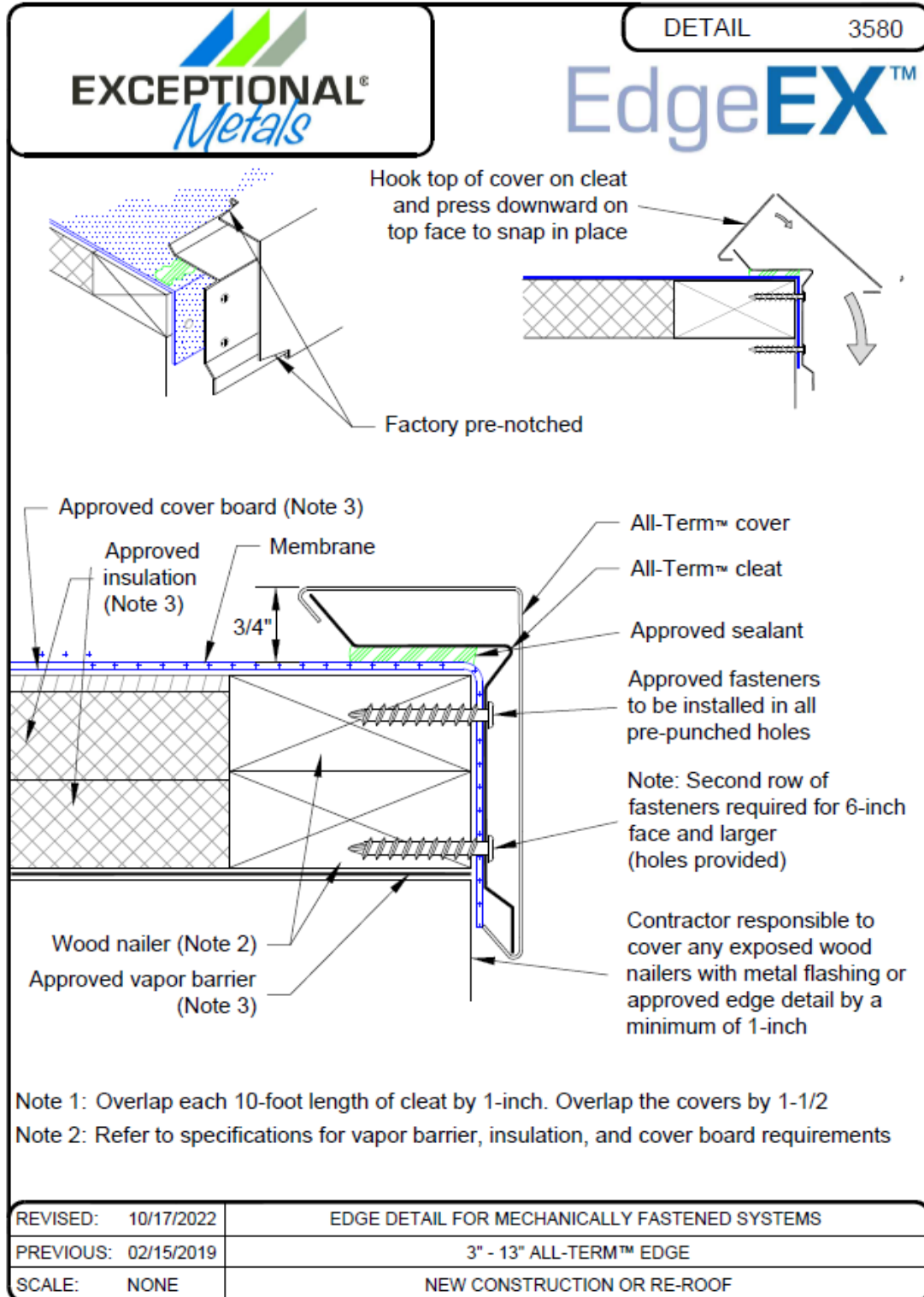
5.2.a Detail #3520: Exceptional Metals Gravel Stop Cover



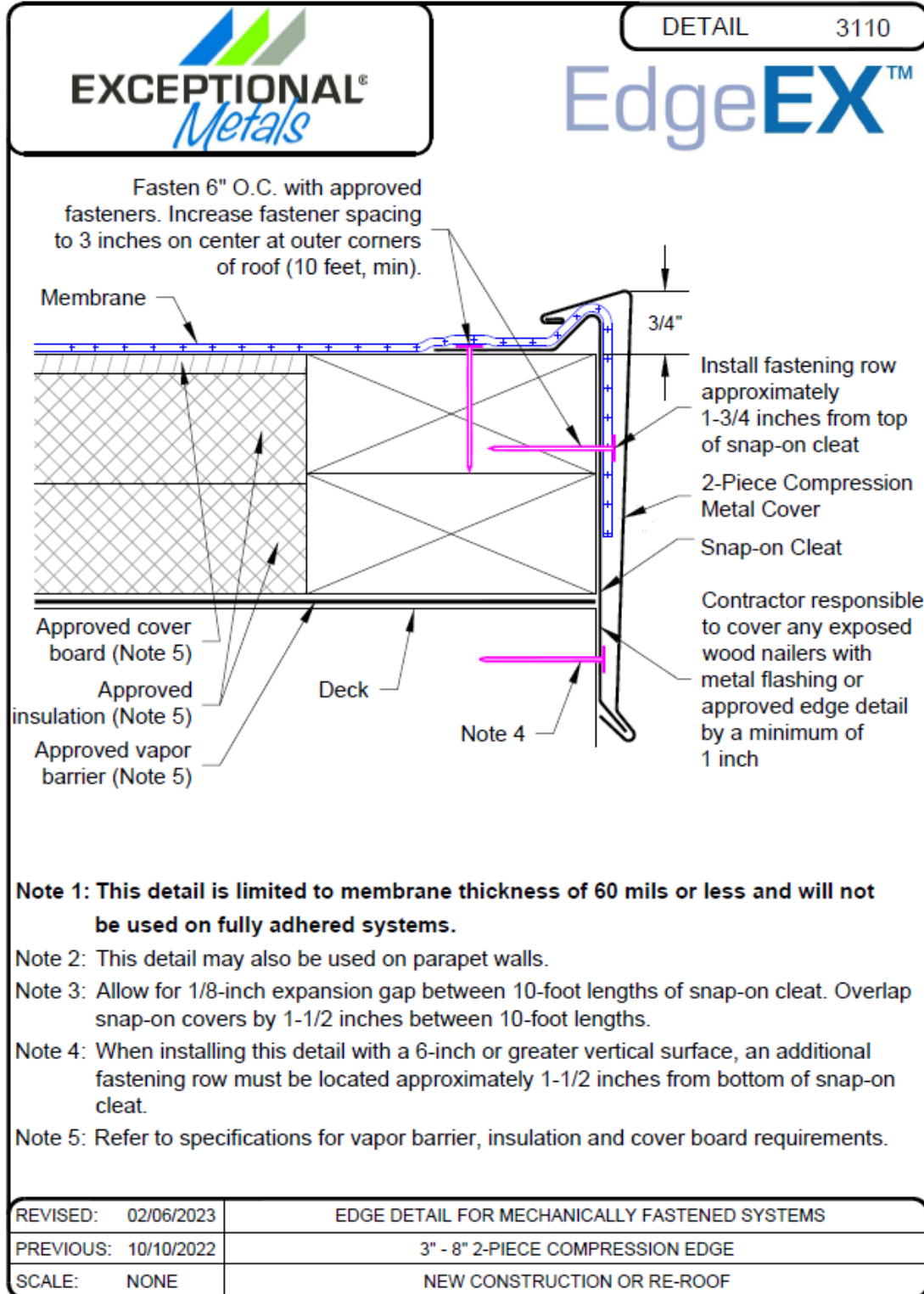
5.2.b Detail #3530: Exceptional Metals Gravel Stop Cover



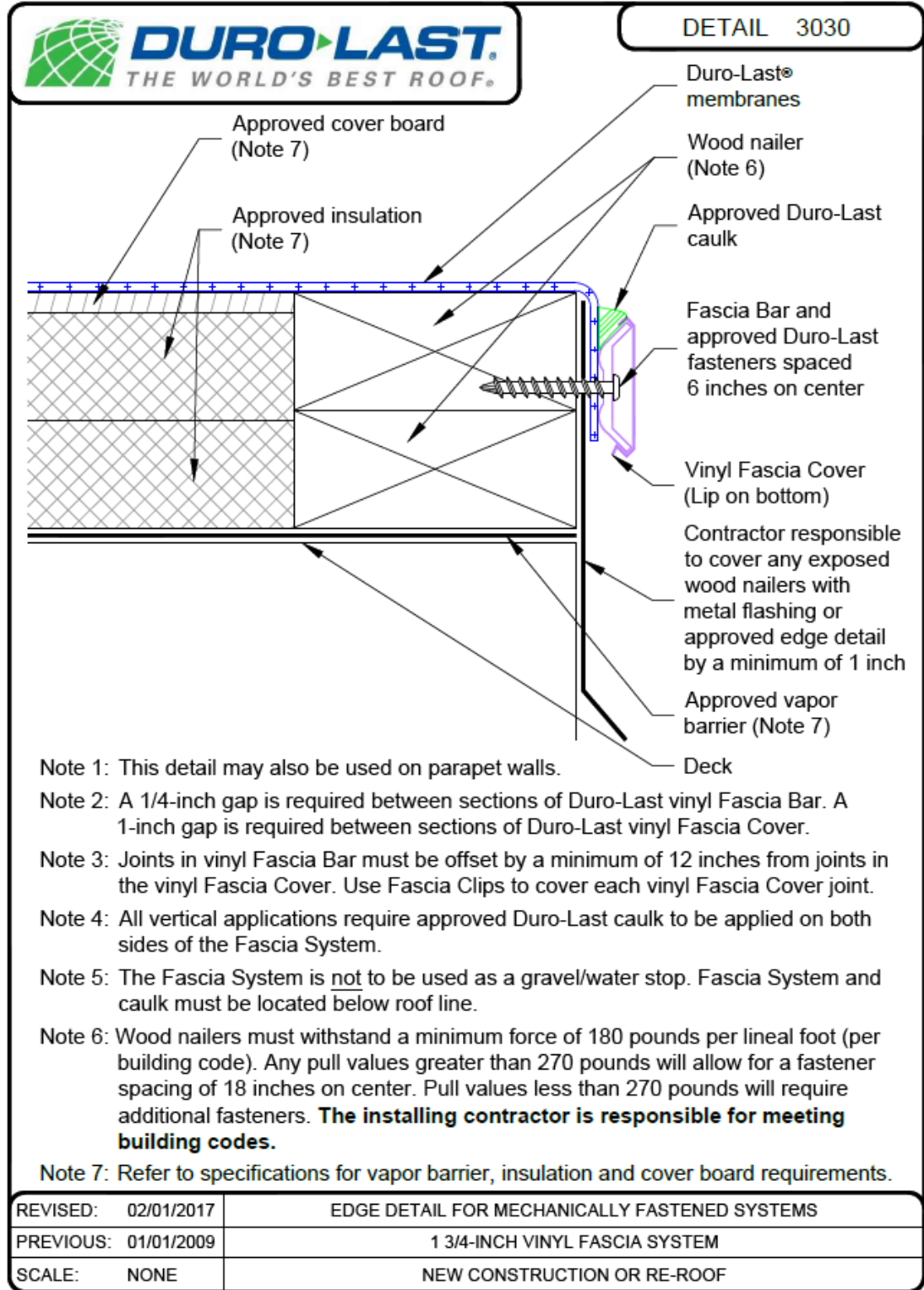
5.3 Detail #3580: All-Term



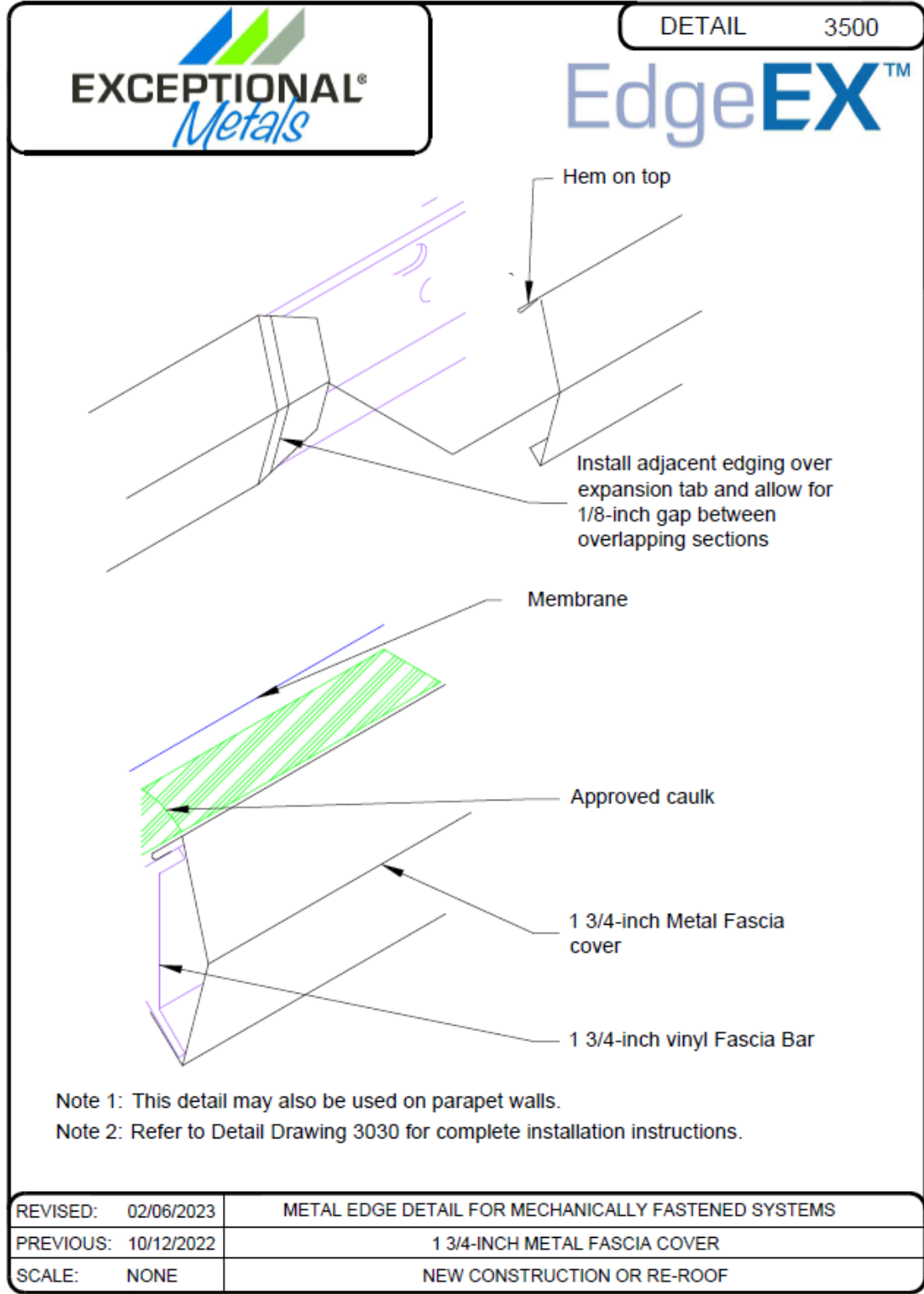
5.4 Detail #3110: 2-Piece Snap-On Compression System



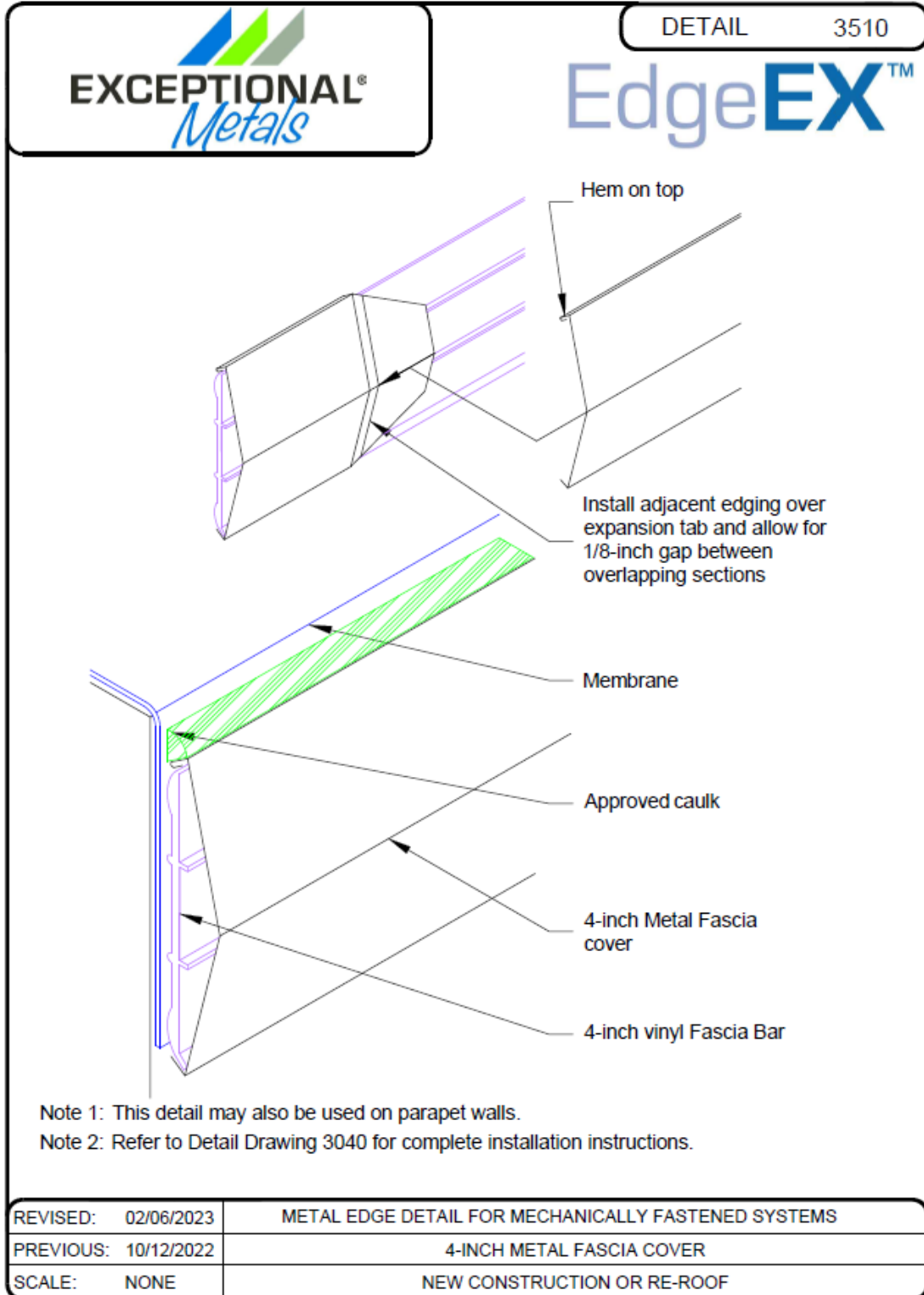
5.5 Detail #3030: Duro-Last Fascia System




5.6.a Detail #3500: Metal Fascia System



5.6.b Detail #3510: Metal Fascia System



5.7 Detail #6055: Snap Coping Wall Metal Cap



DETAIL 6055

16 gauge metal cleat (16-inch lengths)

6-inch concealed splice plate

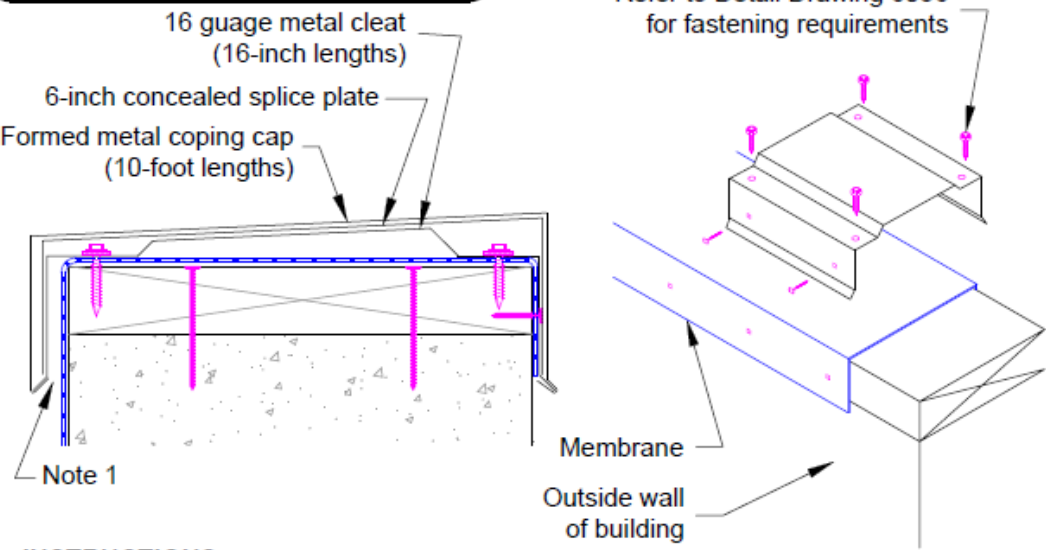
Formed metal coping cap (10-foot lengths)

Note 1

Refer to Detail Drawing 6056 for fastening requirements

Membrane

Outside wall of building



### INSTRUCTIONS

1. Install **Snap Coping corner cap** prior to installing straight lengths of **Snap Coping cap**. Refer to **Detail Drawing 6056**.
2. Place **snap cleats** approximately 2 inches from any wall end. Fasten snap cleats per **Detail Drawing 6056**.
3. Place **snap cleats** along straight length of parapet on 60-inch centers. At middle of run, adjust location to fit a short **Snap Coping cap** length. Maximum snap cleat spacing is 60 inches on center. Fasten snap cleats per **Detail Drawing 6056**.
4. Install **splice plates** per **Detail Drawing 6056**.
5. Begin installing **Snap Coping cap** from ends, working inward to center, and leaving a 1/4-inch gap between coping sections for thermal expansion. There should be a snap cleat and splice plate at each **Snap Coping cap** joint, and at least one snap cleat in middle of each 10-foot section. Install per **Detail Drawing 6056**.

Note 1: Allow for a 3/8-inch gap between snap cleat and roof-side wall to allow **Snap Coping cap** to snap into place.

Note 2: All fasteners must penetrate into nailer by a minimum of 1-1/2 inches.

REVISED:	10/21/2022	PARAPET WALL DETAIL FOR MECHANICALLY FASTENED SYSTEMS
PREVIOUS:	03/18/2019	4" X 8" X 3" MIN SNAP COPING CAP
SCALE:	NONE	NEW CONSTRUCTION OR RE-ROOF

-END OF NER-