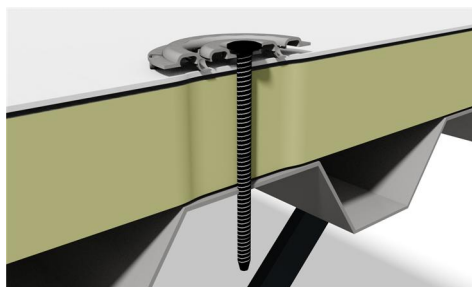


CORRECT



Overlapping membrane not shown for clarity of details

INCORRECT

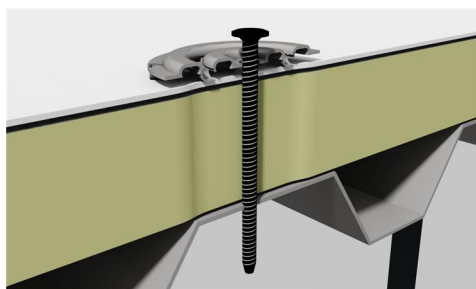
Fastener snapped



Fastener bent



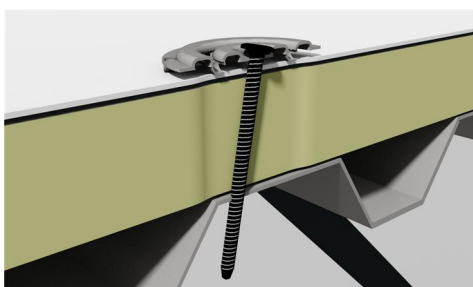
Fastener underdriven



Fastener overdriven



Fastener driven at an angle



Note 1: Fasteners may penetrate through the top or bottom flute of metal decks.

Note 2: Fasteners must penetrate metal, wood and structural concrete decks by 1 inch, measuring down from the top of the deck

REVISED:	10/12/17	GENERAL DETAIL FOR MECHANICALLY FASTENED SYSTEMS
PREVIOUS:	07/17/17	FASTENING INTO METAL AND WOOD DECKS
SCALE:	NONE	NEW CONSTRUCTION OR RE-ROOF