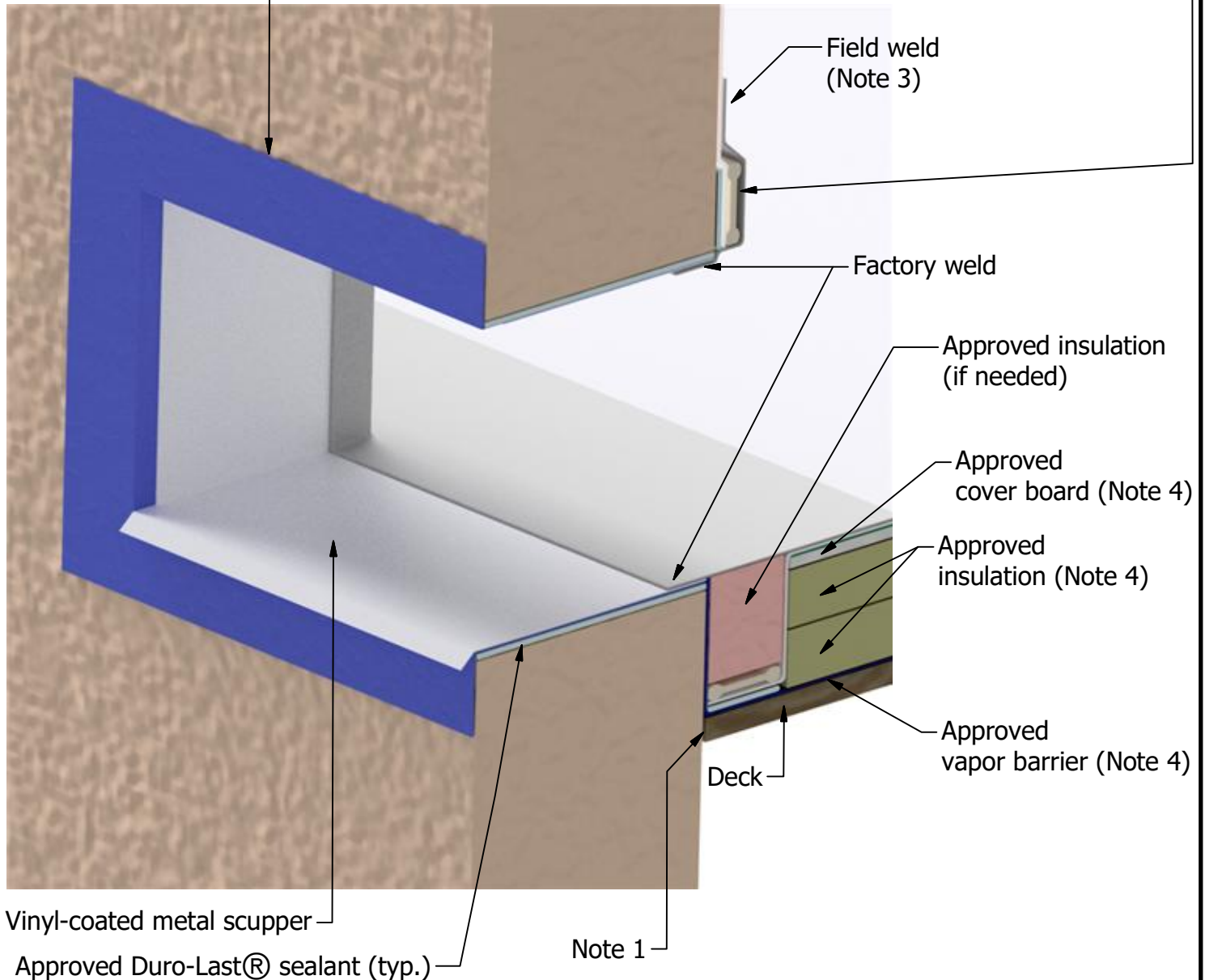


Termination Bar, approved Duro-Last sealant and approved Duro-Last bfasteners spaced 6 inches on center around entire opening of scupper

Metal flange (Note 2)



Note 1: Precaution must be taken to ensure that all wall-to-deck transitions are sealed.

Note 2: Metal flange is back-sealed with factory-applied sealant. Remove paper backing when ready to install scupper.

Note 3: All field welds shall be a minimum of 1-1/2 inches wide.

Note 4: Refer to specifications for vapor barrier, insulation and cover board requirements.

REVISED:	11/30/17	DRAINAGE DETAIL FOR MECHANICALLY FASTENED SYSTEMS
PREVIOUS:	07/27/17	SINGLE SKIRTED VINYL-COATED METAL SCUPPER WITH FLANGE
SCALE:	NONE	NEW CONSTRUCTION OR RE-ROOF