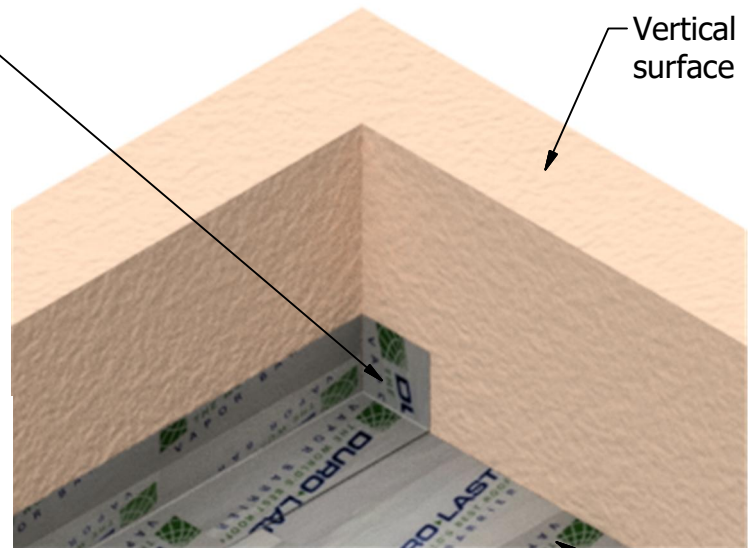


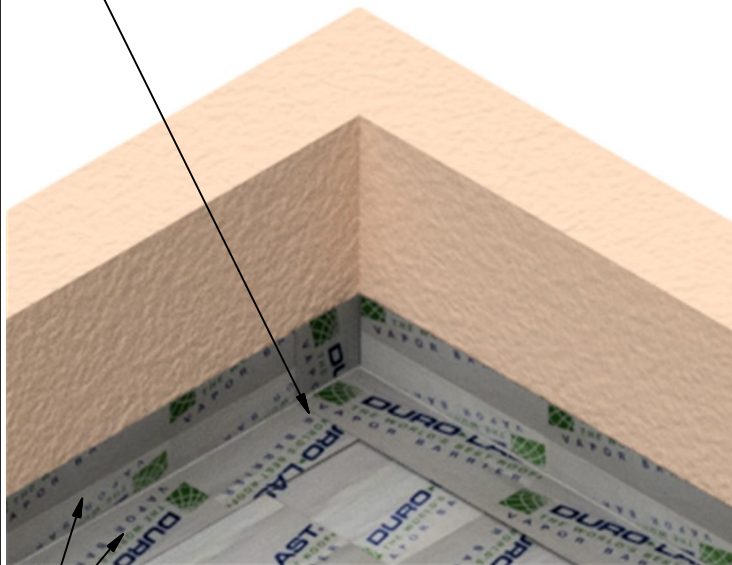
Step 1

Vapor Barrier
(Cut to allow for bend at transition)

Vertical
surface



Vapor Barrier
(Cut to allow for bend at transition)

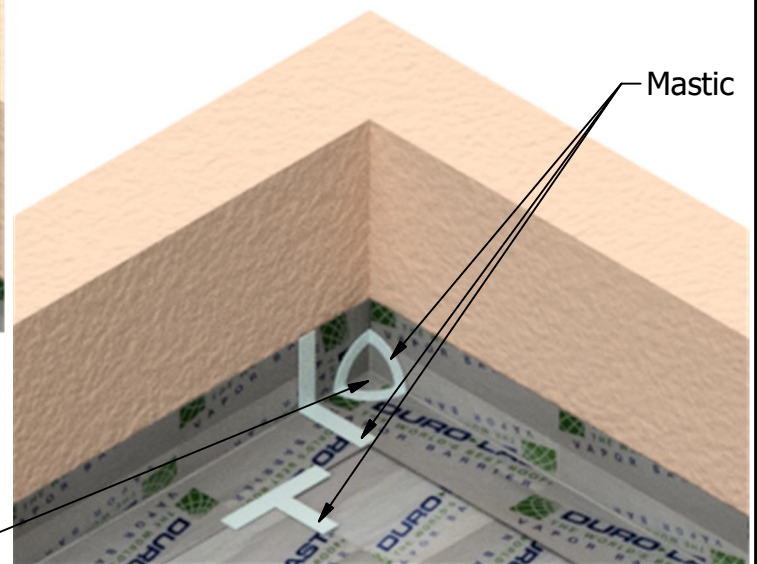
Step 2


2 inches up vertical surface
and 2 inches on deck, min.

Step 3

Deck

Mastic



Corner Patch (Cut a 4x4-inch square
or 4-inch diameter circle from vapor barrier roll)

Note 1: Prime surfaces as required by Vapor Barrier Product data Sheet.

Note 2: Overlap each section a minimum of 2 inches as shown above.

Note 3: If vapor barrier will be used as a temporary roof, utilize

Duro-Guard® mastic to seal edges of T-Laps and overlaps as shown above. Edges must be sealed a minimum of 6 inches out from each T-Lap

Note 4: If Duro-Guard mastic is used, do not allow contact to the Duro-Last membrane. A proper slip sheet or insulation must be used to separate both products.

REVISED:	12/5/17	INSIDE CORNER
PREVIOUS:	08/07/17	DURO-GUARD VAPOR BARRIER
SCALE:	NONE	NEW CONSTRUCTION OR RE-ROOF