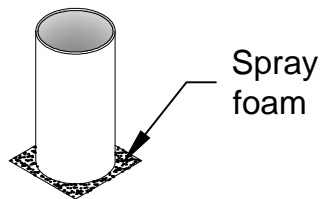


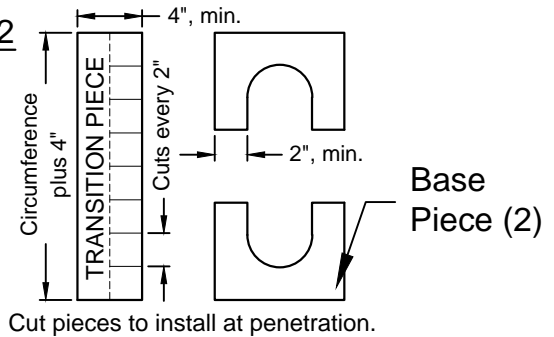
STEP 1



Spray foam

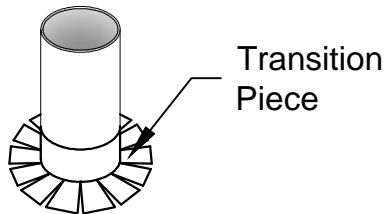
Fill all gaps with spray foam.

STEP 2



Cut pieces to install at penetration.

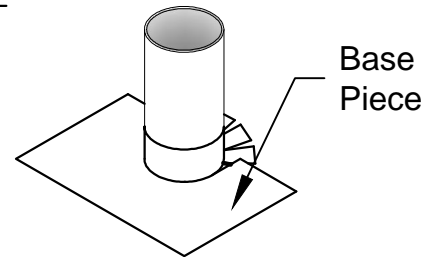
STEP 3



Transition Piece

Install Base Piece.

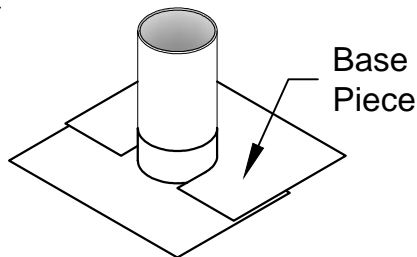
STEP 4



Base Piece

Install first Deck Piece on downhill side.

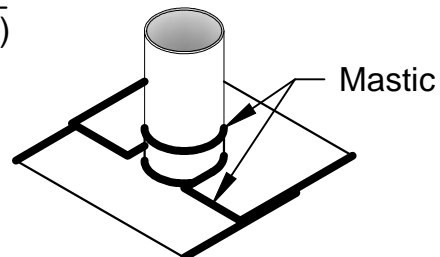
STEP 5



Base Piece

Install second Deck Piece on uphill side.

STEP 6 (Note 3)



Mastic

Apply Duro-Guard mastic as shown above.

Note 1: Primer is not required when roof system is mechanically fastened or when substrate is a steel deck. All other situations require primer.

Note 2: Fill all gaps with urethane foam prior to installation of vapor barrier. Shave excess foam level to deck.

Note 3: Mastic is not required unless Duro-Last® Vapor Barrier will be used as a temporary roof. When required, seal 6 inches out from all T-Lap edges as shown above.

Note 4: If mastic is used, do not allow it to contact Duro-Last membrane. A proper slip sheet or insulation must be used to separate both products.

Note 5: Refer to specifications for vapor barrier, insulation and cover board requirements.

Note 6: Meets requirements for air barrier assemblies as defined under section C402.1.2.2 ASSEMBLIES of the International Energy Conservation Code.

REVISED: 08/24/2017

GENERAL DETAIL FOR VAPOR BARRIER

PREVIOUS: 04/01/2014

ROUND PENETRATION - OPTION 2

SCALE: NONE

NEW CONSTRUCTION OR RE-ROOF