

# DURO-LAST® DRAIN GUARD

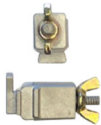
## DESCRIPTION:

The Duro-Last® Drain Guard is a roof drain cover used on roof drain installations to help protect against roof drain clogs. The Drain Guard has a unique horizontal, low profile and open slot design. The horizontal design provides a larger functional area of the roof drain cover, or net free area. This will allow for greater water flow and prevent clogging caused by build-up on the roof drain cover.

The Drain Guard consists of a rust and corrosion-resistant blue cast aluminum cover and three weldable Duro-Last membrane tabs. Each tab is attached with stainless steel fittings and wing nuts. The wing nuts can be unscrewed to remove the strainer for cleaning of the roof drain.

- Cover dimensions:
  - Diameter: 13 inches
  - Height at center: 3 inches
- Net free area: 82.905 square inches

Optional Duro-Last Drain Guard Clamping Ring Attachment Clips can be ordered separately if connection to a clamping ring roof drain is required.



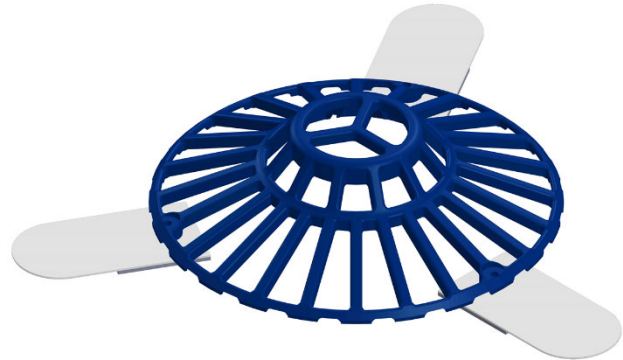
**DURO-LAST DRAIN GUARD CLAMPING RING ATTACHMENT CLIPS AND EXAMPLE OF CLAMPING RING LOCKING TAB**

Compatible clamping rings:

- Watts® B2-FLG
- Zurn® 56588
- Zurn 29480
- Wade® W-3000-I-FRG
- JR Smith® 3260
- JR Smith 35400

VOLUMETRIC FLOW RATE FOR NOMINAL 4-INCH ROOF DRAIN – VERTICAL PIPE ROOF DRAIN TEST		
Head of Water (in.)	With Drain Guard (GPM)	Open Roof Drain (GPM)
1	57	69
2	85	90
3	113	138
4	139	214
5	160	253
6	189	297

3<sup>rd</sup> party testing was completed as described in ASPE/IAPMO/ASPE Z1034-2015 Test Method for Evaluating Roof Drain Performance.



**DRAIN GUARD WITH INCLUDED MEMBRANE TABS (USED WITH DURO-LAST DRAIN BOOT INSTALLATIONS)**



**DRAIN GUARD WITH OPTIONAL ATTACHMENT CLIPS (USED WITH COMPATIBLE CLAMPING RING ROOF DRAIN INSTALLATIONS)**

## ORDERING:

Drain Guards can be ordered individually. Each Drain Guard will come with three membrane tabs.

- White tabs (Item #18301)
- Tan tabs (Item #18301B)
- Gray tabs (Item #18301G)
- Attachment Clips (set of 2) (Item #1830-2)  
(The optional Attachment Clips do not come with the Drain Guard. Each set of clips is ordered separately.)

## STORAGE AND HANDLING:

- Always store in a dry location protected from the elements.

## PRECAUTIONS:

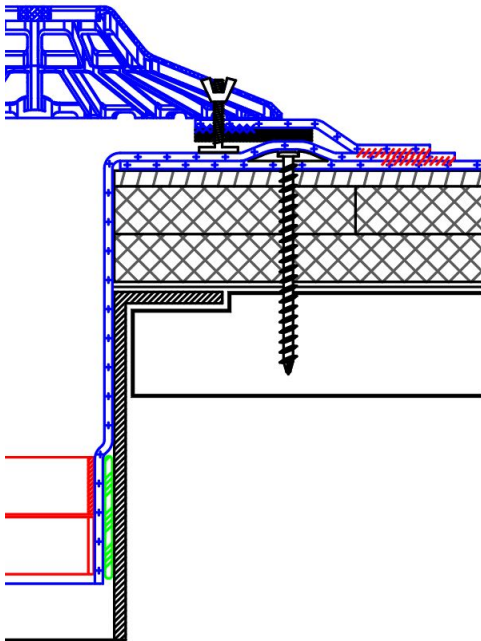
- Wear proper personal protective equipment, such as gloves and eye protection.

**INSTALLATION:****1. Limitations**

- a. The Drain Guard with membrane tabs must not be mechanically fastened to the roof deck.
- b. The Drain Guard is not a watertight detail by itself. Refer to Detail Drawings 2021 or 2022 for complete installation requirements.
- c. The contractor is responsible for compliance with all applicable building codes.

**2. Drain Guard with membrane tabs installed over a Duro-Last Drain Boot**

- a. Install a Drain Boot as per Detail Drawing 2021 prior to installing the Drain Guard.
- b. Center the Drain Guard over the roof drain and weld each of the three membrane attachment tabs to the deck membrane with a minimum 1-1/2 inch weld.

**3. Drain Guard with Attachment Clips installed over a clamping ring roof drain**

- a. Install the deck membrane as per Detail Drawing 2022 prior to installing the Drain Guard.
- b. Center the Drain Guard over the roof drain and align both Attachment Clips with the clamping ring locking tabs.
- c. Loosen the Attachment Clips by turning the wing nuts counterclockwise. The Attachment Clips should slide freely.
- d. Slide the Attachment Clips underneath the clamping ring locking tabs and tighten the wing nuts until the Attachment Clips cannot move.

