

PRODUCT DESCRIPTION

TRUFast® Roofing Adhesive is a two-component, low-rise, construction grade, polyurethane foam adhesive designed to adhere roof insulations, thermal barriers, cover boards and fleece backed single- ply membranes to acceptable substrates in both new construction and recover applications. Trufast Roofing Adhesive is applied in continuous beads for board and insulation attachment or applied in splatter coat coverage for fleece back membrane attachment. Anyone using or supervising use of Trufast Roofing Adhesive should read and understand the safety data sheets available at www.trufast.com prior to use.

CODE APPROVALS & LISTINGS

FM Global



Miami-Dade
County



State of Florida

FL#: 4500

Underwriters Laboratories



Trufast Roofing Adhesive is approved by most roofing manufacturers.

PACKAGE TYPES & COVERAGE RATES

Container Size	Approx. Net Weight	Approx. Coverage (SqFt)*			
		4" OC	6" OC	12" OC	Splatter
Box of (4) 1500ml Cartridges	3.7 lbs.	165	250	500	N/A
Pressure Tank/Canister Kit	89 lbs.	1,165	1,750	3,500	2,400
15-gallon Drum Set	275 lbs.	3,000	4,500	7,500	6,000
50-gallon Drum Set	991 lbs.	10,000	15,000	25,000	20,000

*Coverage rates may vary based on factors such as substrate type, bead size, etc.

- 1. Cartridges** are sold in boxes containing four 1500ml cartridge tubes and six static mixing tips. Cartridges require the cordless Trufast Dispensing Gun (sold separately).
- 2. Pressure tank/canister kits** contain one A-side tank, one B-side tank, one dispense gun and 25' hose assembly, 10 static mixers, 10 shower caps for splatter coat application, 10 extension straws for bead application, one petroleum jelly packet, one assembly wrench, and one instruction sheet. Kits contain everything needed for adhesive application and require no additional equipment.
- 3. 15 and 50-gallon drum kits** contain one A-side drum and one B-side drum. Drums require the use of a specialized pump or dispense equipment (sold separately). Care should be taken to ensure the dispense equipment applies material at a 1:1 ratio, especially on equipment with ratio adjustment (Patriot Jr, ect.).



ACCEPTABLE APPLICATIONS

Insulations, Cover Boards, Thermal Barriers, & Membranes

1. High Density Wood Fiberboard
2. Polyisocyanurate
3. Extruded Polystyrene (XPS)
4. Expanded Polystyrene (EPS)
5. Dens Deck®
6. Securock®
7. Oriented Strand Board (OSB) and Plywood
8. Fleece backed single ply membranes

Note: Perlite and Fiberglass Insulation are not acceptable. Existing Phenolic insulation must be removed. Maximum board sheet size is 4' x 4' to minimize curvature of board.

Decks and Substrates

1. Structural Concrete
2. Lightweight Concrete
3. Gypsum
4. Cementitious Wood Fiber
5. Wood (min. thickness 19/32")
6. Steel (painted or galvanized, min. 22 gauge)
7. Weathered, Smooth BUR
8. Gravel surfaced BUR
9. Mineral/Granulated Mod Bit Cap Sheet
10. Weathered, Smooth Mod Bit Cap Sheet
11. Fresh Type II or IV asphalt (Must be Primed)
12. Some Roof Coatings (Pull Test Required)
13. Most vapor barriers

Note: Adhesion tests are required when adhering to existing roofs to determine the bond strength to the existing roof surface. All surfaces listed above must be clean, dry, and free of any loose materials/debris and in sound condition. Contact Trufast Technical Department regarding any substrates not listed above at 800-443-9602.

STORAGE & HANDLING

1. Keep containers closed tightly during transport and storage.
2. Protect containers from puncture during transport.
3. Protect from moisture, direct sunlight, and freezing temperatures (32°F/0°C).
4. Ideal storage temperature is 55-90°F to achieve maximum product shelf life of 12 months.
5. Storage conditions outside of the above recommendations will shorten product shelf life.

INSTALLATION TEMPERATURE



1. Pressure tanks/canisters

- a. Tanks/canister temperature must be 70-85°F during application. Failure to maintain proper temperature will result in off ratio foam mixture.
- b. Use tank heaters in cold conditions and shade tanks from sunlight in warm conditions.
- c. Avoid storing tanks overnight on rooftop/jobsite when ambient temperatures are excessively hot or cold, or use heat blankets.
- d. Substrate temperature must be above 32°F during application.

2. Cartridges, 15-gallon, and 50-gallon drums

- a. Cartridge/drum temperature is recommended to be above 50°F. Colder cartridge/drum temperatures will result in excessive foam rise and cure times as well as excessive workload on dispensing equipment, or off-ratio conditions.

- b. Use drum heaters in cold conditions and shade tanks from sunlight in warm conditions.
- c. Substrate temperature must be above 32°F during application.
- d. Verify 1:1 application ratio of drums with adjustable pump systems (ie: Patriot Jr.)

Proper Ratio

The adhesive must be dispensed in a 1:1 ratio.



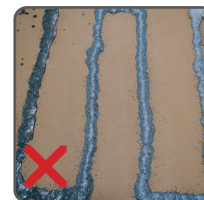
1:1 Ratio

Greyish green in color.
Low-rise, tacky foam after cure.



A-Rich Ratio

Slow to rise/no reaction. Yellow in color.
Brittle foam after cure.



B-Rich Ratio

Very fast reaction/skin over. Bluish grey in color. Soft, flexible foam after cure.

SURFACE PREPARATION

1. Trufast recommends an adhesive pull test over any reconditioned surface (recover) to ensure bond strength and structural integrity of the existing surface.
2. Prior to applying TRUFAST Roofing Adhesive, the surfaces to which the adhesive is being applied must be inspected to ensure that it is smooth, flat, clean, sound, dry and free of any oil, sharp edges, loose and foreign materials or irregular surfaces. Fibrous cement decks should be checked for their ability to retain the adhesive (some types may allow adhesive to pass through).
3. Existing substrates having residual asphalt must be cleaned and scraped smooth as best as possible. Any remaining asphalt that was not previously exposed (non-oxidized, glossy, shiny) must be primed with approved primer (contact Trufast Technical Dept.).
4. When applying the TRUFAST Roofing Adhesive over existing materials/surfaces, all wet materials must be removed, and remaining moisture dried before the application. Do not use on substrates showing signs of deterioration or loss of structural integrity.

INSTALLATION INSTRUCTIONS

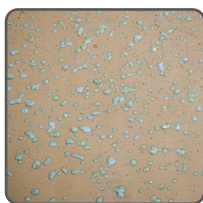
Follow set up instructions on the box or included in the package for cartridges and pressure tanks. For 15-gallon and 50-gallon drums follow set up recommendations of pump/dispense equipment supplier, but ensure adhesive is dispensed/applied at a 1:1 ratio. Consult Trufast technical department with any questions at 800-443-9602.

1. Bead application (Insulation/coverboard/thermal barriers)

- a. Apply adhesive in ¾"-1" width beads out of mixer tip. Space beads 12", 6", or 4" apart according to roof designer specification to ensure proper wind uplift performance.
- b. Adhesive will then expand several inches in width and rise.
- c. Once adhesive has risen/foamed up, boards may be placed onto adhesive. Rise time may vary from 10-15 seconds on hot (100°F+) substrates to 5+ minutes on cold (32°F) substrates.
- d. Tack/open/working time of the adhesive may vary from 1 minute on hot (100°F+) substrates to 10+ minutes on cold (32°F) substrates.
- e. Apply ballast (buckets/pails/bags of weight) to boards for 10-15 minutes after setting onto adhesive. Take care to ballast over joining board corners and edges as adhesive will continue rise and could cause uneven board edges without ballast.

2. Splatter application (Fleece backed membrane)

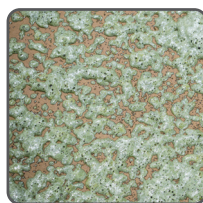
- a. Use Trufast shower cap "clicked" onto the static mixer for pressure tanks and drums.
- b. Sweep side to side with application to splatter the deck/substrate with droplets covering approximately 75% of the surface area. (3lbs applied per 100 sqft)
- c. Once adhesive has risen/foamed up, adhering membrane may be placed onto adhesive. Rise time may vary from 10-15 seconds on hot (100°F+) substrates to 5+ minutes on cold (32°F) substrates.
- d. Tack/open/working time of the adhesive may vary from 1 minute on hot (100°F+) substrates to 10+ minutes on cold (32°F) substrates.
- e. Immediately brush membrane surface with shop broom to push out entrapped air and ensure good contact with adhesive. Do not delay in brushing membrane.
- f. If ends of membrane want to curl upwards (TPO), apply ballast for 10-15 minutes to allow adhesive to begin cure.



*Splatter Pattern
Light Coverage*



*Splatter Pattern
Good Coverage*



*Splatter Pattern
More Than
Enough Coverage*

CAUTIONS AND SAFETY INFORMATION

1. TRUFAST Roofing Adhesive safety data sheets should be read and understood by anyone using or supervising use of TRUFAST Roofing Adhesive.
2. Use only in a well-ventilated area and avoid breathing vapors.
3. Safety glasses, goggles, or a face shield are required.
4. Avoid contact with skin. Wear nitrile or other approved gloves, long sleeves, and pants.
5. Do not smoke, eat, or drink while actively using this product.
6. For professional use only. Do not allow children near this product.
7. Protect containers from freezing. Do not leave exposed to direct sunlight for prolonged periods of time.

DISPOSAL & CLEANUP

1. Uncured adhesive can be cleaned with solvents such as mineral spirits, xylene, etc. Cured adhesive can be scrapped from surfaces with a metal scrapper.
2. Individual A-side or B-side adhesive components in their liquid state should be treated as hazardous waste and disposed of in a licensed facility according to federal, state, and local regulations.
3. Empty cartridges, 15-gallon, and 50-gallon drums can be disposed of in most landfills as non-hazardous waste. However, be sure to consult federal, state, and local regulations for your specific area with regards to the treatment of hazardous and nonhazardous wastes.
4. Pressure tank/canister disposal:
 - a. Discharge canisters with included dispense gun and mix tip as foam completely into a waste container until one canister is empty of material.
 - b. Remove dispense gun manifold and discharge residual chemical into a sealed waste container (ie: plastic bucket) until residual chemical and gas are evacuated and both canisters are depressurized.
 - c. Empty canisters, dispense gun, and hoses can be disposed of in most landfills as non-hazardous waste. However, be sure to consult federal, state, and local regulations for your specific area with regards to the treatment of hazardous and nonhazardous wastes.
 - d. Dispose of captured residual chemical in a licensed facility according to applicable federal, state, and local regulations. Do not discharge chemical into sewer system or allow to contaminate soil.

ADDITIONAL INFORMATION & DISCLAIMER

The information given on this PDS is subject to change without notice. Always check the Trufast website at www.trufast.com for the latest information, changes and updates or contact Trufast at 800-443-9602.

The performance specification published in this Trufast product literature is based on controlled laboratory tests and are intended as a guideline only. They are not guaranteed in any way by the ALTENLOH, BRINCK & CO. US, INC. (the supplier), since building design, engineering, and construction, including workmanship and materials, are beyond the control of the supplier. The supplier recommends that a field pull test be conducted to verify the substrate provides adequate pull-out values.

TRUFAST Roofing Adhesive PDS, Rev. Date 06/2023