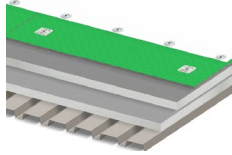




## Duro-Last® PVC Membranes Mechanically Fastened Over Steel

**Warranty Term**  
15, 20, 25, and 30 Years  
Up to 54 mph (86.9 km/h)



- Duro-Last® PVC membranes – mechanically fastened
- Cover board (when required) – mechanically fastened
- Insulation (when required) – mechanically fastened
- Steel – 18- to 22-gauge (1.21 – 0.76 mm)

Refer to the Duro-Last Specifications, Guides, and Details at [www.duro-last.com](http://www.duro-last.com)

<b>All Products</b>	Must be purchased or approved by Duro-Last.		
<b>Deck Requirements</b>	18- to 22-gauge steel		
<b>Construction Types</b>	Any wet or damaged materials must be removed prior to installation. <input type="radio"/> New construction <input type="radio"/> Re-cover <input type="radio"/> Partial tear-off <input type="radio"/> Complete tear-off		
<b>Vapor Barriers</b>	Consult with a design professional to determine requirements of vapor barriers. <input type="radio"/> Duro-Last Vapor Barrier <input type="radio"/> Duro-Last Torch-Down Vapor Barrier <input type="radio"/> Duro-Blue® with taped seams		
<b>Warranty Term by Membrane Thickness</b>	<input type="radio"/> 15-year warranty – 40 mil (1.02 mm) <input type="radio"/> 20-year warranty – 50 mil (1.27 mm) <input type="radio"/> 25-year warranty – 60 mil (1.52 mm) <input type="radio"/> 30-year warranty – 80 mil (2.03 mm) <b>25- and 30-year warranties require only metal plates.</b>		
<b>Membrane Options</b>	<input type="radio"/> Duro-Last 40, 50, 60 mil <input type="radio"/> Duro-Last X™ 50, 60, 80 mil <input type="radio"/> Duro-Tuff® 50, 60, 80 mil <input type="radio"/> Duro-Last EV 50, 60, 80 mil		
<b>Membrane, Insulation, and Cover Board Fasteners</b>	Minimum 1-inch (25-mm) penetration <input type="radio"/> HD Screw #14 <input type="radio"/> EHD Screw #15		
<b>Membrane Plates</b>	<input type="radio"/> Cleat Plates® <input type="radio"/> Poly-Plates (not recommended over hard boards) <input type="radio"/> Induction weld plates		
<b>Cover Board Plates</b>	<input type="radio"/> 3-Inch Metal Plates <input type="radio"/> Cleat Plates <input type="radio"/> Poly-Plates (not recommended) <input type="radio"/> Induction weld plates		
<b>Insulation Plates</b>	<input type="radio"/> Insulation Plates <input type="radio"/> 3-Inch Metal Plates <input type="radio"/> Cleat Plates <input type="radio"/> Poly-Plates <input type="radio"/> Induction weld plates		
<b>Seaming Requirement</b>	1-1/2-inch (40-mm) continuous weld using a hand-held welder with a silicone roller or an automatic welder.		
<b>Increased Wind Speed</b>	Must be reviewed by the Duro-Last Engineering Services Department. <input type="radio"/> Wind speed coverage exceeding 54 mph (86.9 km/h)		
<b>Code Requirements</b>	Local code must be met. Some code agencies may require special design considerations. Contact the Duro-Last Engineering Services Department for assistance.		
<b>Fire Ratings</b>	Fire ratings may require certain slip sheets, insulations, or gypsum-based cover boards.		
<b>Approved Slip Sheets</b>	<input type="radio"/> Duro-Blue <input type="radio"/> Duro-Weave® <input type="radio"/> Geotextile <input type="radio"/> Ballast Mat <input type="radio"/> FR-10 <input type="radio"/> VersaShield®		
<b>Minimum Thickness</b>	<b>Substrate Material</b>		<b>Minimum Fasteners Per 4 x 8 ft (1.2 x 2.4 m)</b>
<b>Inches</b>	<b>mm</b>		
1	25	Duro-Guard® ISO II or ISO III	5
1/2	13	Duro-Guard ISO HD	5
2	51	Duro-Guard ISO HD Composite	5
1/4	6	Duro-Guard DEXcell® Glass Mat	4
7/8	22	Duro-Guard DEXcell Cement	4
1/4	6	Duro-Guard DensDeck®	4
1/4	6	Duro-Guard Securock® Glass-Mat	4
3/8	10	Duro-Guard fan folds	16 per bundle – ≤5 ft (1.5 m) laps 28 per bundle – >5 ft (1.5 m) laps

NOTE: Buildings over 40 ft (12.2 m) tall or in high wind zones may require additional fastening. Request a Wind Calc from Engineering to confirm attachment patterns.

**DISCLAIMER**

This document is meant as a quick reference and may not include details necessary for project completion. Refer to the full Duro-Last specifications or contact the Duro-Last Engineering Services Department for additional details.