



CONDUCTOR HEAD

DESCRIPTION:

The Conductor Head is designed to attach to the wall below the scupper, leaving the scupper visible from the ground. It complements the roof design and directs rain water into downspouts.

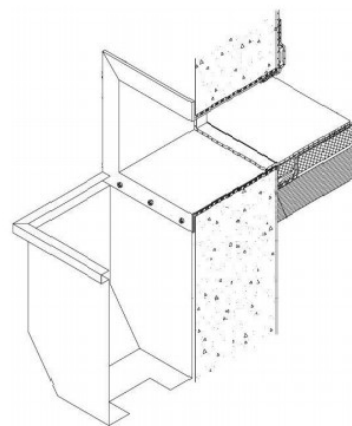
- Standard designed conductors have the same appearance as the vinyl-back collector.
- Commonly ordered with a metal flange scupper, producing an attractive combination.

INSTALLATION:

1. Install in accordance with Duro-Last Detail #2071.
2. Any deviation from the requirements set forth in detail drawings must be pre-approved, in writing, by the Duro-Last Technical Department.

WARRANTY:

Duro-Last offers a finish and substrate warranty.



Material	Gauge	Finish
Aluminum	.040	Mill or Kynar®
Stainless Steel	24-gauge	N/A
Bonderized Steel	24-gauge	N/A
Galvalume®	24-gauge	Mill or Kynar®
Copper	16 oz.	Mill