

DOWNSPOUT

DESCRIPTION:

Duro-Last Downspouts are available with an open or closed face. Both open and closed face downspouts are available in standard 10' lengths.

- Custom sizes and assemblies are available.
- A- and B-Style Elbows, Square-to-Round Adaptors and Drop/Outlets available.
- LEED® compliant.

FEATURES (OPEN-FACE)

- Help eliminate blockage due to ice and debris build-up.
- Will nest together by cutting a 1" notch out of each side of the receiving piece.

FEATURES (CLOSED-FACE)

- Standard 24-gauge downspouts feature a Pittsburgh seam for a professional finish that also eliminates the need for rivets.
- Tapered ends nest together up to 3" and eliminate field notching and crimping.

INSTALLATION:

1. Install in accordance with Duro-Last Details #2080, #2085, and #2086.
2. Any deviation from the requirements set forth in detail drawings must be pre-approved, in writing, by the Duro-Last Technical Department.

WARRANTY:

Duro-Last offers a finish and substrate warranty.

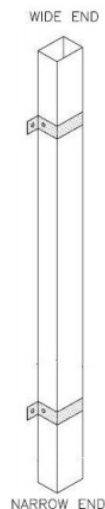
Closed-Face



Drop/Outlet

Open-Face

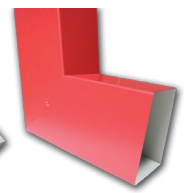
Downspout



Square-To-Round
Adaptor



A-Style



B-Style
Elbow

Material	Gauge	Finish
Aluminum	.040	Mill or Kynar®
Stainless Steel	24-gauge	N/A
Bonderized Steel	24-gauge	N/A
Galvalume®	24-gauge	Mill or Kynar®
Copper	16 oz.	Mill