

GUTTERS

DESCRIPTION:

Duro-Last offers four box-style gutter profiles in three sizes each. Support straps are provided based on 30" centers.

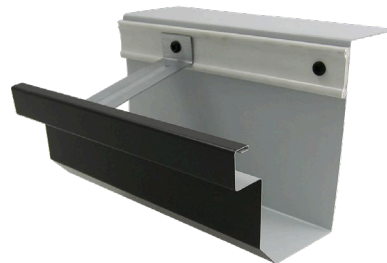
- Front edge of gutter is 2" lower than the back edge.
- Internal splice plates eliminate the need to completely rivet sections together.
- Riveted inside and outside miters can be fabricated to any angle.
- Roof flanges can be bent to accommodate various roof pitches or eliminated altogether.
- Custom sizes and profiles are available.
- LEED® compliant.

INSTALLATION:

1. Install in accordance with Duro-Last Details #2091 and #3025.
2. Any deviation from the requirements set forth in detail drawings must be pre-approved, in writing, by the Duro-Last Technical Department.

WARRANTY:

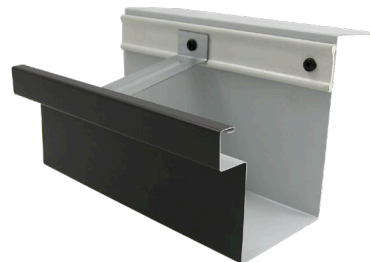
Duro-Last offers a finish and substrate warranty.



DX - Style



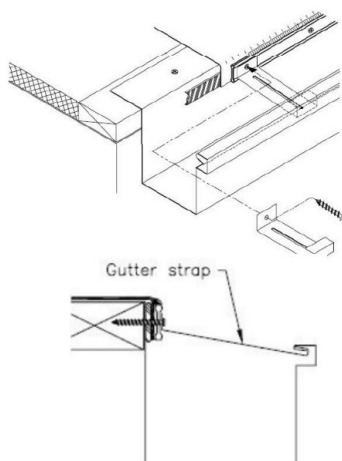
EX - Style



LX - Style



MX - Style



Material	Gauge	Finish
Aluminum	.040	Mill or Kynar®
Stainless Steel	24-gauge	N/A
Bonderized Steel	24-gauge	N/A
Galvalume®	24-gauge	Mill or Kynar®
Copper	16 oz.	Mill