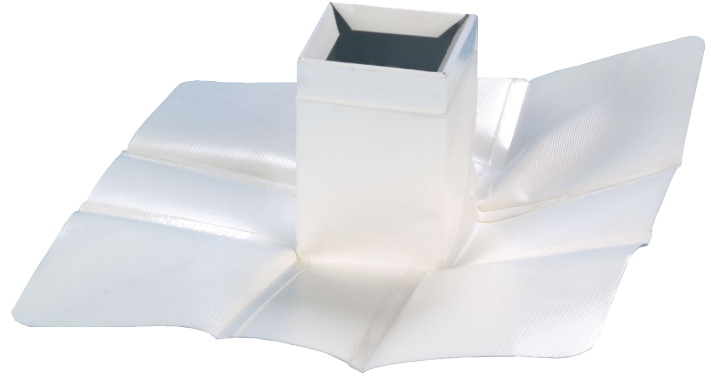


## PITCH PAN

### DESCRIPTION:

Custom-fabricated pitch pans deliver a watertight seal around rooftop protrusions.

- Fabricated from 24-gauge vinyl-coated metal and 6" PVC membrane skirt to exact specification.
- 4" height minimum.
- Custom designs available upon request.
- Pitch pan is shipped with one corner open to install around existing penetrations.



### INSTALLATION:

1. Install in accordance with Duro-Last Detail #4045.
2. Any deviation from the requirements set forth in detail drawings must be pre-approved, in writing, by the Duro-Last Technical Department.

### WARRANTY:

Duro-Last offers a finish and substrate warranty.

