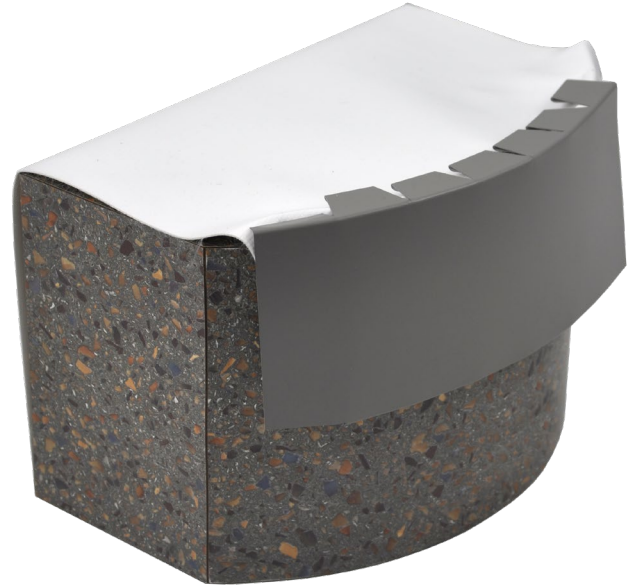


# UNIVERSAL 2-PIECE FLEX COMPRESSION EDGE

## DESCRIPTION:

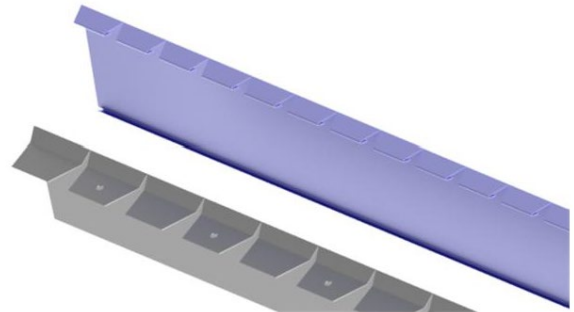
The Universal 2-Piece Flex Compression Edge system is made with a flat face to help it conform to a radius edge. The system consists of a 24-gauge Galvalume® base and a snap-on cover notched in 3" intervals to easily snap over radial surfaces.

- Fabricated in 5' lengths; 3" to 8" widths.
- Cover is double-hemmed to prevent roof material from chafing.
- Can be installed on both inside and outside radius edges.
- Standard Universal 2-Piece Compression Edge can be ordered with a flat face to match this detail.
- Does not conform to an arched or vaulted radius.
- LEED® compliant.



## INSTALLATION:

1. A wood nailer is required if 1" or greater of insulation is used.
2. The wood nailer should be attached in accordance with ANSI/SPRI ES-1.
3. Install in accordance with Duro-Last Detail Drawings 3110 and 3513.
4. Any deviation from the requirements set forth in detail drawings must be pre-approved, in writing, by the Duro-Last Technical Department.



## WARRANTY:

Duro-Last offers a finish and substrate warranty.

Material	Gauge	Finish
Aluminum	.040 in.	Mill or Kynar®
Stainless Steel	24-gauge	N/A
Bonderized Steel	24-gauge	N/A
Galvalume®	24-gauge	Mill or Kynar®