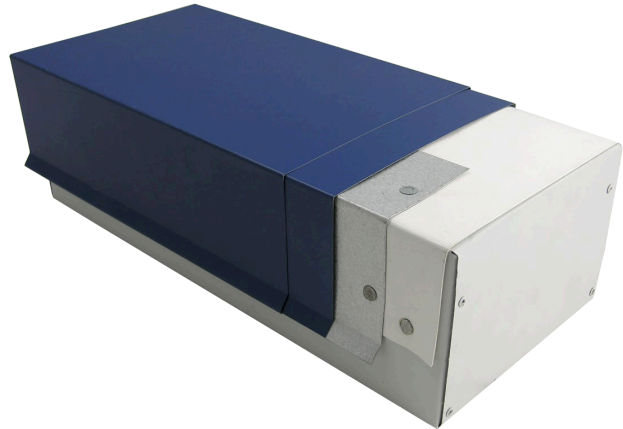


# FLAT COPING

## DESCRIPTION:

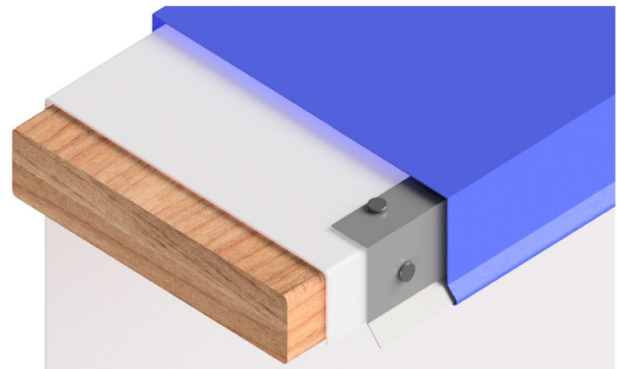
Flat Coping offers a complete and attractive finish to any parapet wall. The system rests flat on top of the parapet. A continuous cleat secures the front, and the back is secured by a grommeted fastener.

- Fabricated 10' lengths; widths are customized to specification.
- 6" concealed splice plate provides coverage for expansion and contraction.
- Continuous cleat is fabricated from 22 or 24- gauge Galvalume Plus®.
- Riveted inside and outside miters and endcaps are available.
- LEED® compliant.



## INSTALLATION:

1. A wood nailer attached to the top of the parapet wall is required.
2. This nailer should be attached to the wall in accordance with ANSI/SPRI ES-1.
3. Install in accordance with Duro-Last Detail #6050 and Installation #6050.
4. Any deviation from the requirements set forth in detail drawings must be pre-approved, in writing, by the Duro-Last Technical Department.



## WARRANTY:

Duro-Last offers a finish and substrate warranty.

Material	Gauge	Finish
Aluminum	.040	Mill or Kynar®
Stainless Steel	24-gauge	N/A
Bonderized Steel	24-gauge	N/A
Galvalume®	24-gauge	Mill or Kynar®
Copper	16 oz.	Mill