

ASPIRE DRAIN MAT (ROLL)

DESCRIPTION:

Aspire Drain Mat is a polypropylene barrier, designed to facilitate good drainage under the Aspire Paver System grid, and to provide additional protection for the rooftop membrane. Aspire Drain Mat is comprised of a woven polypropylene core sandwiched between non-woven filter fabrics which allows for a 3-in. underlap and 3-in. overlap flap.

Use of the Aspire Drain Mat is required over Duro-Last® PVC and Duro-TECH™ TPO membranes.

ORDERING:

Refer to the Aspire Interlocking Paver System product data sheet located at [Duro-Last.com](https://www.duro-last.com) for additional guidelines.

Aspire Drain Mat is available in 200-ft² (18.6-m²) rolls. (Item #12040)

- 39 in. x 61-1/2 ft x 1/4-in. thick
(991 mm x 18.7 m x 6-mm thick)
- Net Coverage: 167 ft² (15.5 m²)



STORAGE AND HANDLING

- Store product in a dry, cool place.

PRECAUTIONS:

- Read Safety Data Sheets ("SDS") prior to using. SDS can be found at: <https://www.duro-last.com/>.
- Wear proper personal protective equipment, such as gloves and eye protection, per the SDS.

ASPIRE DRAIN MAT PROPERTIES	
Core Material	Polypropylene
Thickness – ND80 Fabric	1/2 in. (13 mm)
Thickness – CD50 Fabric	1/4 in. (6 mm)
Flow Rate: 500 psf (23.9 kPa)	10.55 gal/min/ft (131 L/min/m)
Fabric Color	Gray
Elongation to Break (MD)	ND80 Fabric: 36.1% CD50 Fabric: 52%
Elongation to Break (CMD)	ND80 Fabric: 40.3% CD50 Fabric: 57.2%
Dtex per Filament (dpf)	15



INSTALLATION:

1. General

- Do **not** adhere Aspire Drain Mat to roofing membranes.
- Ensure that the Aspire Drain Mat will not interfere with doors.
- Carefully inspect and clean the roof's surface.

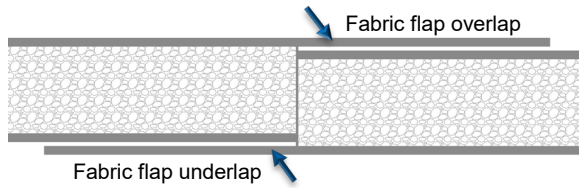
2. Installation

- Calculate the total rooftop area needed to be covered with the Aspire Drain Mat, and the amount of product required to cover the area.
- Align the first strip of Aspire Drain Mat with the slope of the roof.



- Beginning at one edge of the roof, lay the first strip of the Aspire Drain Mat.
 - Leave a 1/2-in. (13-mm) gap between the drain mat and all edges or penetrations.
- Cut the strip to the appropriate length and trim the fabric flap from the first strip on the side closest to the roof edge.

- e. Cut and lay the next strip so that the fabric overlap flap from the first strip and underlap flap of the second strip can be bonded together.



- f. Apply adhesive or Duro-Caulk® to the second strip in a zigzag pattern along the non-flap edge next to the fabric overlap flap of the first strip.



- g. Press the overlap flap of the first strip into the applied adhesive on the second strip.



- h. Repeat the process until the appropriate area is covered with the drain mats.
- i. Cut the Aspire Drain Mat to allow for penetrations or drains, as necessary.

