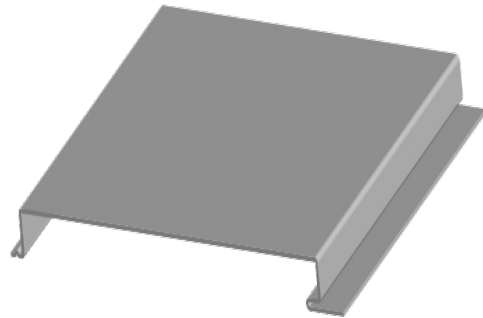


# ARTISAN® SERIES WALL AND SOFFIT PANEL

## DESCRIPTION:

The simplicity of the Artisan Series panel is its best design feature. Uniform dimensions and a clean appearance allow the designer to plan modules, eliminate complicated pieces and follow wall curvatures. Available in a flat or beaded profile, the Artisan panel can be vertical, horizontal, perpendicular or skewed to the building line, allowing the designer multidimensional freedom to create.



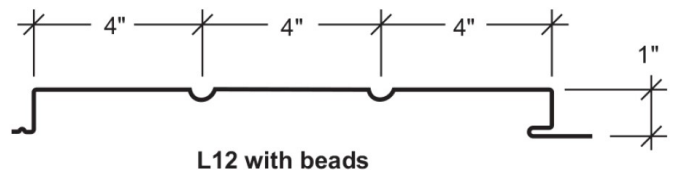
## SPECIFICATIONS:

- The Artisan Series panel uses the positive fastened method and is attached directly to the substructure. The fastener is concealed behind the flush face.
- The Artisan panel is used for soffits and interior liners.
- The Artisan panel carries Florida approvals.



## SPECIFICATIONS:

- Applications: Soffit and Wall
- Coverage Widths: 12"
- Panel Attachment: Concealed Fastening System
- Gauges: 24 (standard); 26 and 22 (optional)
- Finishes: Smooth (standard); Embossed (optional)
- Coatings: Galvalume Plus®, Signature® 200, Signature® 300, Signature® 300 Metallic



*Product samples, detail sheets, color chips, and color chart are available for your submittal package. For assistance with questions or submittals, contact your local Sale Representative or call Duro-Last.*

Category	Characteristic	Test Method	Purpose	Result
STRUCTURAL	Uplift Resistance	ASTM E1592	Provides a standard procedure to evaluate or confirm structural performance under uniform static air pressure difference	See Load Chart Section*
	Gravity Loads	AISI S100	North American Specification for the Design of Cold-Formed Steel Structural Members	See Section Properties and Allowable Load Table Section*
ROOF LISTINGS	Roof Performance - Florida approval	ASTM E 1592	Florida product approval is the approval of products and systems, which comprise the building envelope and structural frame, for compliance with the structural requirements of the Florida Building Code	See FL #11919.1