

DURO-TECH TPO-COATED METAL COLLECTOR BOX

DESCRIPTION:

Duro-TECH TPO-Coated Metal Collector Boxes ("Collector Box") are utilized for rainwater diversion through a parapet scupper. The Collector Box then connects to a downspout to direct rainwater to the ground.

Collector Boxes are fabricated from PVDF-coated metal and constructed with a Pittsburgh seam that eliminates the need for rivets. A double-skirt Duro-TECH TPO-Coated Metal Scupper is factory-welded to the back of the Collector Box. The Collector Box size is configured according to the scupper and downspout size to allow for proper drainage.

ORDERING:

Collector Boxes can be ordered individually in custom sizes, colors, and combinations. All Exceptional Metals metal colors are available.

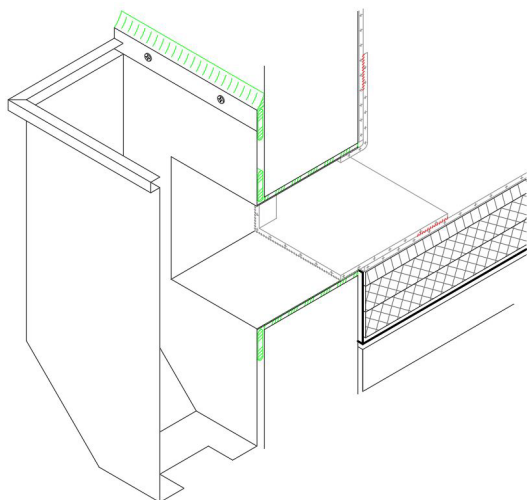
- Contact the Duro-Last Customer Service Department at 800-248-0280 for assistance in ordering.
- Refer to the [metal color chart](http://www.duro-last.com/metal_color_chart) at www.duro-last.com.

STORAGE AND HANDLING:

- Keep away from ignition sources.
- Always store in a dry location protected from the elements.

PRECAUTIONS:

- Keep away from ignition sources.
- Wear proper personal protective equipment, such as gloves and eye protection, per the SDS.



INSTALLATION:

Installation must be completed in compliance with the appropriate Duro-TECH TPO details and specifications.

1. Remove plastic protection film from PVDF-coating.
2. Remove the paper backing from the factory-applied sealant located on the Collector Box back.
3. Apply approved TPO Caulk to the top edge of the Collector Box back and to all four sides of the scupper back.
4. Insert the Collector Box scupper through the parapet scupper opening.
5. Fasten 6 inches (152 mm) on center with approved fasteners along the Collector Box attachment flange.
6. Apply approved TPO caulk along the top of the Collector Box attachment flange.
7. Connect appropriate downspout to the Collector Box downspout opening.
8. Prepare all affected surfaces by cleaning with an approved TPO membrane cleaner, if necessary.
9. Using a heat (hot-air) gun, weld the scupper skirt to the surrounding membrane with a minimum 1-1/2-inch (40-mm) weld.

MATERIAL	GAUGE	FINISH
Aluminum	0.040 – 0.050 in. (1.0 – 1.3 mm)	Mill or PVDF-coated
Stainless Steel	24-gauge (0.5-mm)	N/A
Bonderized Steel	24-gauge (0.5-mm)	N/A
Galvalume	24-gauge (0.5-mm)	Mill or PVDF-coated
Copper	16 oz. (22 mils)	Mill