

# DURO-TECH TPO DRAIN GUARD

## DESCRIPTION:

The Duro-TECH TPO Drain Guard ("Drain Guard") is a roof drain cover used on Duro-TECH™ thermoplastic polyolefin ("TPO") membrane drain installations to help protect against clogs. The Drain Guard has a low-profile, open-slot design, which provides a larger net free area. This allows for greater water flow and prevents build-up on the Drain Guard.

The Drain Guard consists of a rust- and corrosion-resistant cast aluminum cover and three weldable Duro-TECH TPO Walkway Pad tabs.

Each tab is attached with stainless steel fittings and wing nuts. The wing nuts can be unscrewed to remove the strainer for cleaning of the roof drain.

- Cover dimensions:
  - Diameter: 13 inches (330 mm)
  - Height at center: 3 inches (76 mm)
- Net free area: 82.9 square inches (53,484 mm<sup>2</sup>)

Optional Duro-TECH TPO Drain Guard Clamping Ring Attachment Clips can be ordered separately if connection to a clamping ring roof drain is required.



DURO-TECH DRAIN GUARD CLAMPING RING ATTACHMENT CLIPS  
AND EXAMPLE OF CLAMPING RING LOCKING TAB

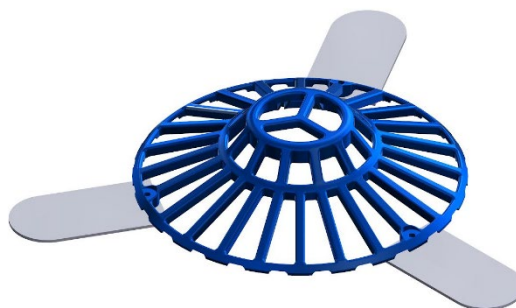


Compatible clamping rings:

- Watts® B2-FLG
- Zurn® 56588
- Zurn 29480
- Wade® W-3000-I-FRG
- JR Smith® 3260
- JR Smith 35400

VOLUMETRIC FLOW RATE FOR 4-INCH (101.6-MM) ROOF DRAIN – VERTICAL PIPE ROOF DRAIN TEST		
Head of Water Inches (mm)	With Drain Guard Gal/min (L/min)	Open Roof Drain Gal/min (L/min)
1 (25)	57 (216)	69 (261)
2 (51.8)	85 (322)	90 (341)
3 (76)	113 (428)	138 (522)
4 (102)	139 (526)	214 (810)
5 (127)	160 (606)	253 (958)
6 (152)	189 (715)	297 (1,124)

3<sup>rd</sup> party testing was completed as described in ASPE/IAPMO/ASPE Z1034-2015 Test Method for Evaluating Roof Drain Performance.



DRAIN GUARD WITH INCLUDED DURO-TECH TPO WALKWAY PAD TABS  
(USED WITH DURO-TECH TPO DRAIN BOOT INSTALLATIONS)



DRAIN GUARD WITH OPTIONAL ATTACHMENT CLIPS  
(USED WITH COMPATIBLE CLAMPING RING ROOF DRAIN INSTALLATIONS)

## ORDERING:

Drain Guards can be ordered individually. Each Drain Guard will come with three Duro-TECH TPO Walkway Pad tabs.

- White tabs (Item #18301TW)
- Tan tabs (Item #18301TB)
- Gray tabs (Item #18301TG)
- Attachment Clips (set of 2) (Item #1830-2)  
(The optional Attachment Clips do not come with the Drain Guard. Each set of clips is ordered separately.)

## STORAGE AND HANDLING:

- Keep away from ignition sources.
- Always store in a dry location protected from the elements.

## PRECAUTIONS:

- Keep away from ignition sources.
- Wear proper personal protective equipment, such as gloves and eye protection.

**INSTALLATION:**

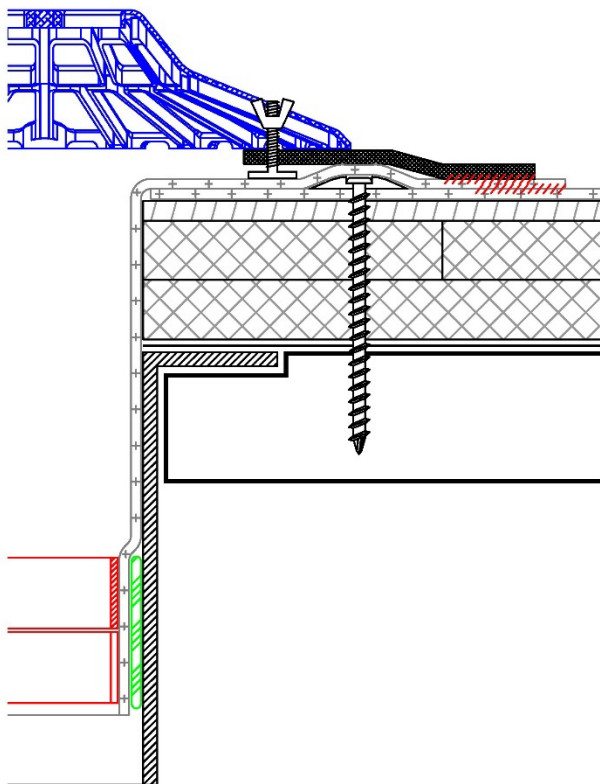
Installation must be completed in compliance with the appropriate Duro-TECH TPO details and specifications.

**1. Limitations**

- The Drain Guard with Duro-TECH TPO Walkway Pad tabs must not be mechanically fastened to the roof deck.
- The Drain Guard is not a watertight detail by itself.
- The contractor is responsible for compliance with all applicable codes.

**2. Drain Guard with Duro-TECH TPO Walkway Pad tabs installed over a Duro-TECH TPO Drain Boot**

- Install a Drain Boot prior to installing the Drain Guard.
- Prepare all affected surfaces by cleaning with an approved TPO cleaner, if necessary.
- Center the Drain Guard over the roof drain and weld each of the 3 Duro-TECH TPO Walkway Pad tabs to the TPO deck membrane with a minimum 1-1/2-inch (40-mm) weld.

**3. Drain Guard with Attachment Clips installed over a clamping ring roof drain**

- Install the TPO deck membrane prior to installing the Drain Guard.
- Center the Drain Guard over the roof drain and align both Attachment Clips with the clamping ring locking tabs.
- Loosen the Attachment Clips by turning the wing nuts counterclockwise. The Attachment Clips should slide freely.
- Slide the Attachment Clips underneath the clamping ring locking tabs and tighten the wing nuts until the Attachment Clips cannot move.

